



# GRANGE STRATHMORE HOTEL

in association with

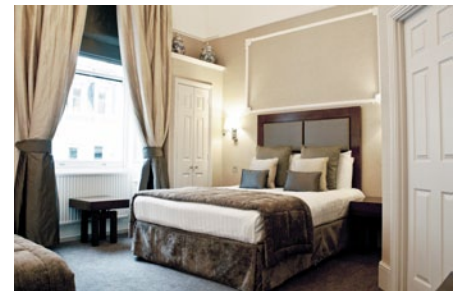
The former London residence of the Earl of Strathmore, the late Queen Mother's father, Grange Strathmore Hotel is a restored Victorian mansion located close to Knightsbridge's exclusive designer boutiques, Hyde Park and London's most famous museums, galleries and cultural attractions.

**Location:** The hotel is situated between Gloucester Road and South Kensington underground stations.

**Guest Bedrooms:** 77 unique guest-rooms are distinctively furnished with a host of contemporary facilities; including wireless and fixed high speed internet and IPTV systems with VOD on LCD flat screen TVs.

**Restaurant and Bars:** The Earl's Restaurant serves breakfast and dinner whilst guests have drinks and lite bites in the Glamis Lounge Bar or gather in the panelled Study for a traditional afternoon tea.

**Meeting and Events:** The Library suite can accommodate an array of private and corporate events, and is supplemented by two additional meeting rooms and three multifunctional syndicate suites.



 Gloucester Road, South Kensington

Room Type

Rack Rate

Percentage Saving

Rates: