

# Southern IFCA Update

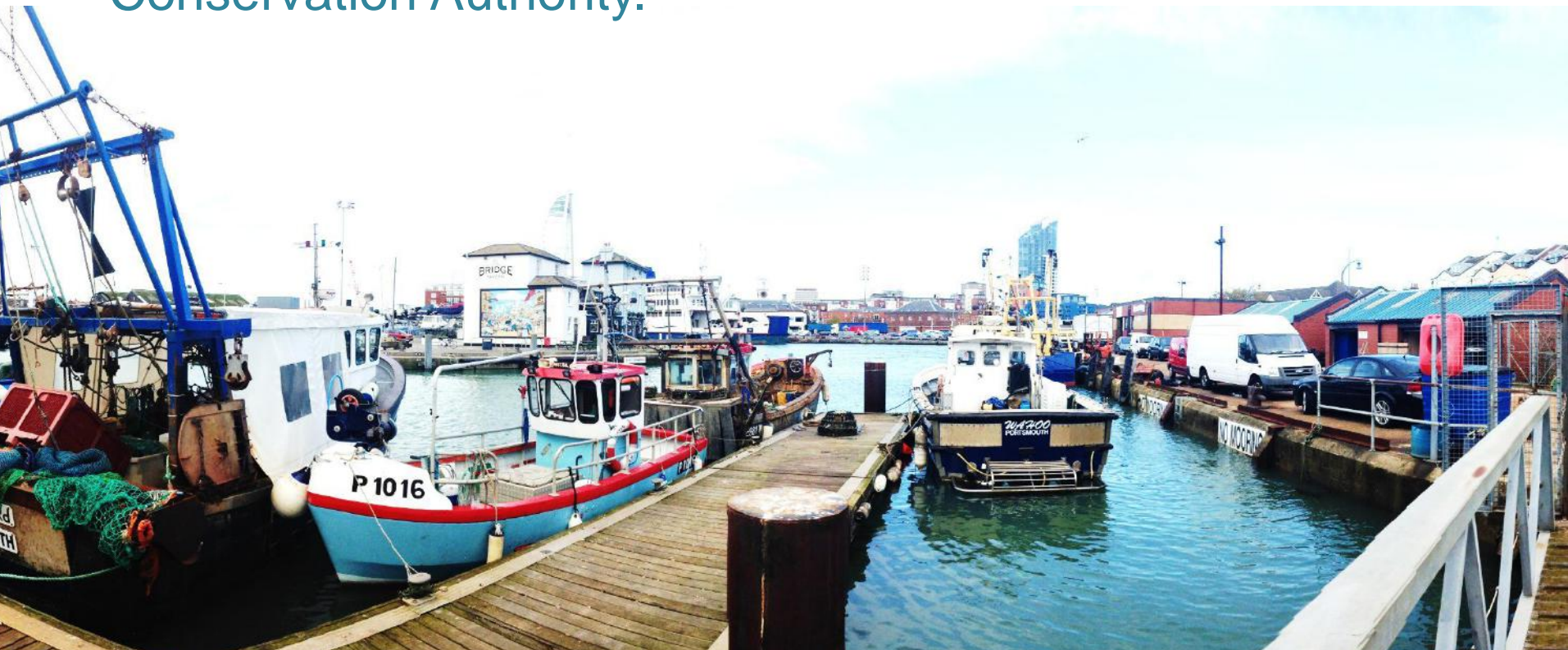
Coastal Futures 2014

**Robert Clark**

Southern Inshore Fisheries and  
Conservation Authority.



Inshore Fisheries and  
Conservation Authority



# Overview

- IFCA Duties and Responsibilities
- The Southern IFCA District
- Delivering the 'Revised Approach' to Fisheries in EMS
- Delivering Fisheries management in MCZs
- Reviewing IFCA Byelaws to deliver balance





# IFCA Duties and Responsibilities

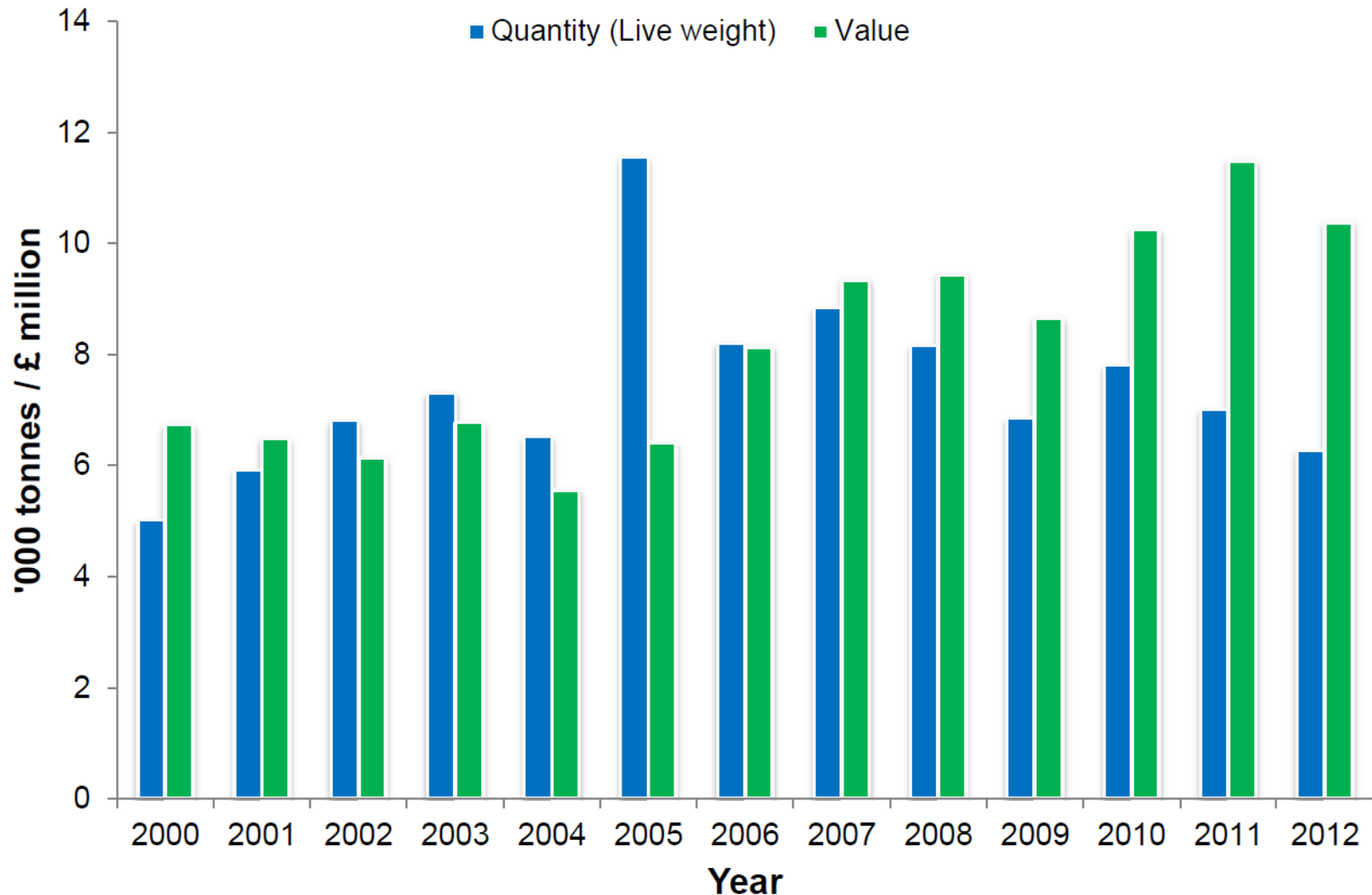
## VISION

“Southern IFCA lead, champion and manage a sustainable marine environment and inshore fisheries, by successfully securing the right balance between social, environmental and economic benefits to ensure healthy seas, sustainable fisheries and a viable industry.”



# The Southern IFCA District

Value and quantity (live weight) of landings 2000 to 2012



# The Southern IFCA District

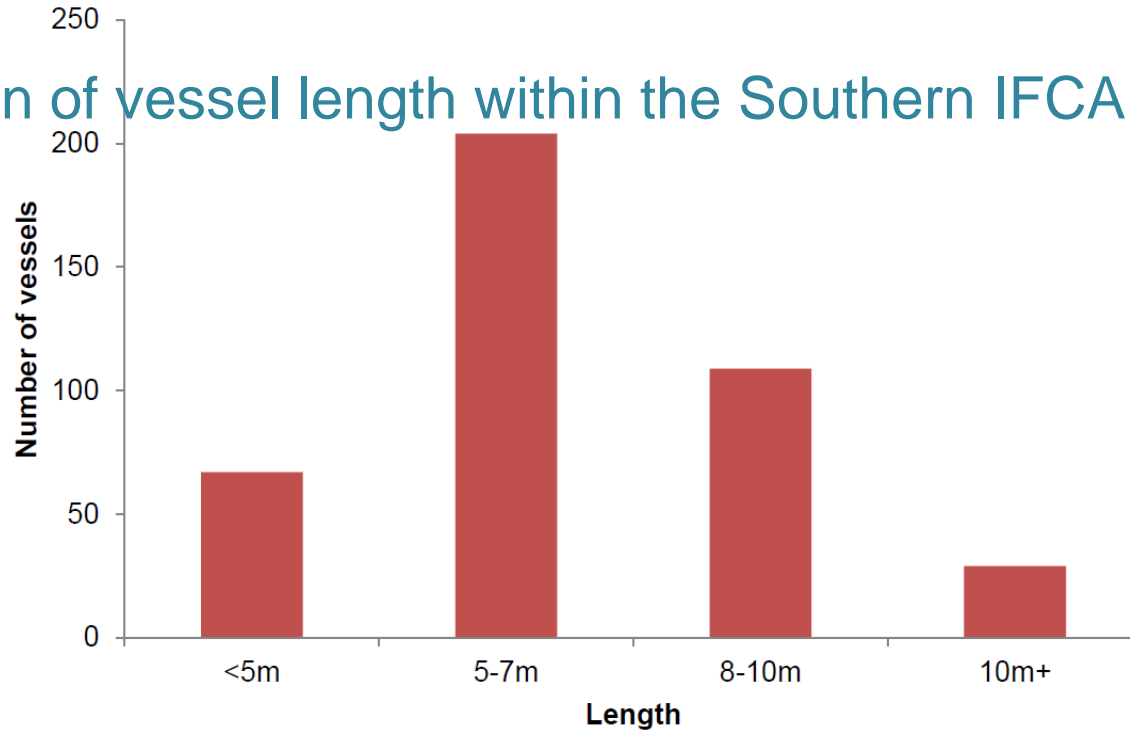


Number of registered vessels in the district between 1984 and 2013



# The Southern IFCA District

## Distribution of vessel length within the Southern IFCA district





# The Southern IFCA District

## 2012 - Top 5 species by weight

Species and gear type	Live weight (t)	Value (£)
Whelks, pots	2801.544	1,847,726
Crabs ( <i>Cancer pagurus</i> ), pots	989.538	1,646,692
Scallops, mechanized dredges	649.319	825,045
Manilla clam, mechanized dredges	271.894	604,676
Manilla clam, hand fishing	117.464	235,419

## 2012 - Top 5 species by value

Species and gear type	Live weight (t)	Value (£)
Whelks, pots	2801.544	1,847,726
Crabs ( <i>Cancer pagurus</i> ), pots	989.538	1,646,692
Lobsters, pots	108.385	1,181,894
Scallops, mechanized dredges	649.319	825,045
Bass, hooks and lines (not specified)	70.834	699,776



# Valuing Recreational Fisheries

- England's sea anglers help boost the economy by spending more than £800 million on the sport.
- Coastal communities benefit when good fishing attracts anglers.
- Sea angling contributes to health and well-being and it is important to participants quality of life.





# Revised Approach to the management of fisheries in European Marine Sites

- Introduced to current fishing activities on a RISK-PRIORITISED BASIS
- A matrix approach – looks at gear types and their likely effect on relevant features for which EMS have been designated
- Fishing activities classed as red, amber, green or blue according to impact of gear type

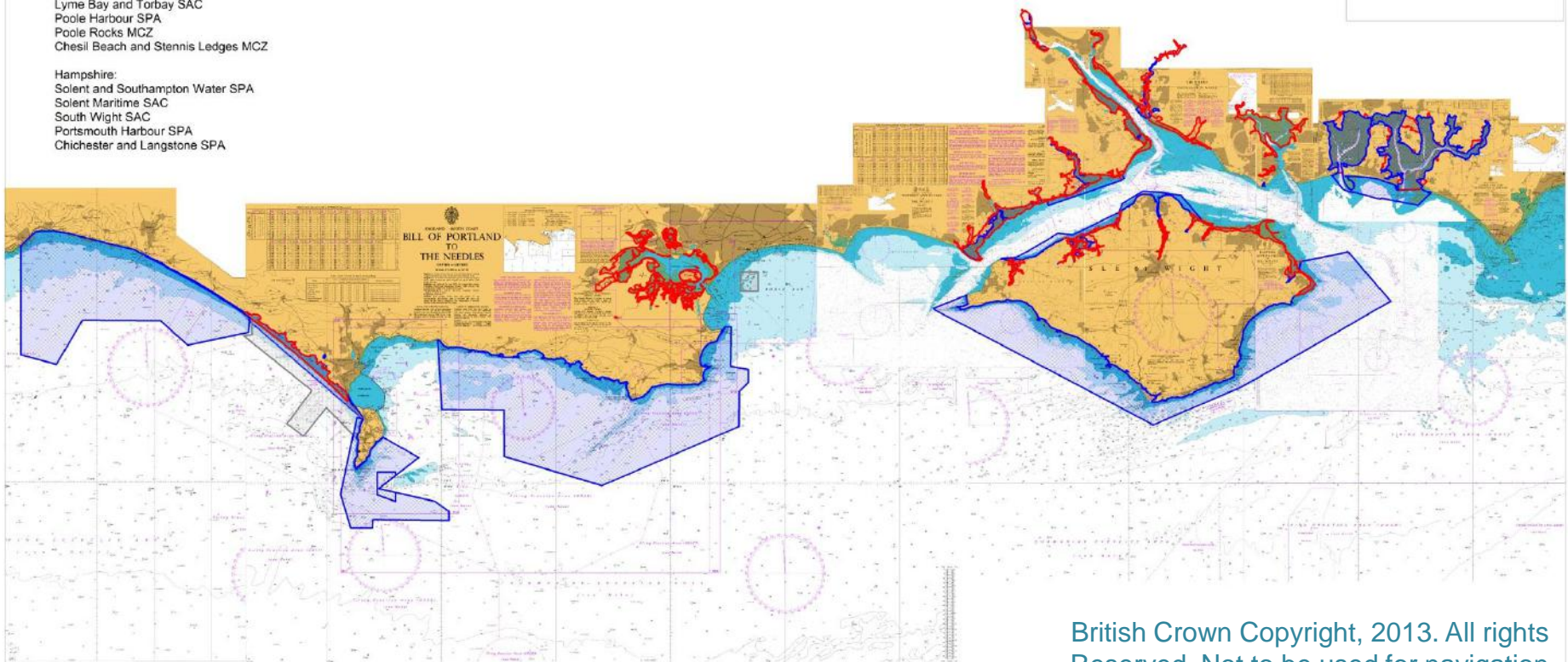


# Marine Protected Areas in the Southern IFCA District

Dorset:  
Chesil and the Fleet SPA  
Chesil and the Fleet SAC  
Studland to Portland SAC  
Lyme Bay and Torbay SAC  
Poole Harbour SPA  
Poole Rocks MCZ  
Chesil Beach and Stennis Ledges MCZ

Hampshire:  
Solent and Southampton Water SPA  
Solent Maritime SAC  
South Wight SAC  
Portsmouth Harbour SPA  
Chichester and Langstone SPA

SAC MCZ SPA

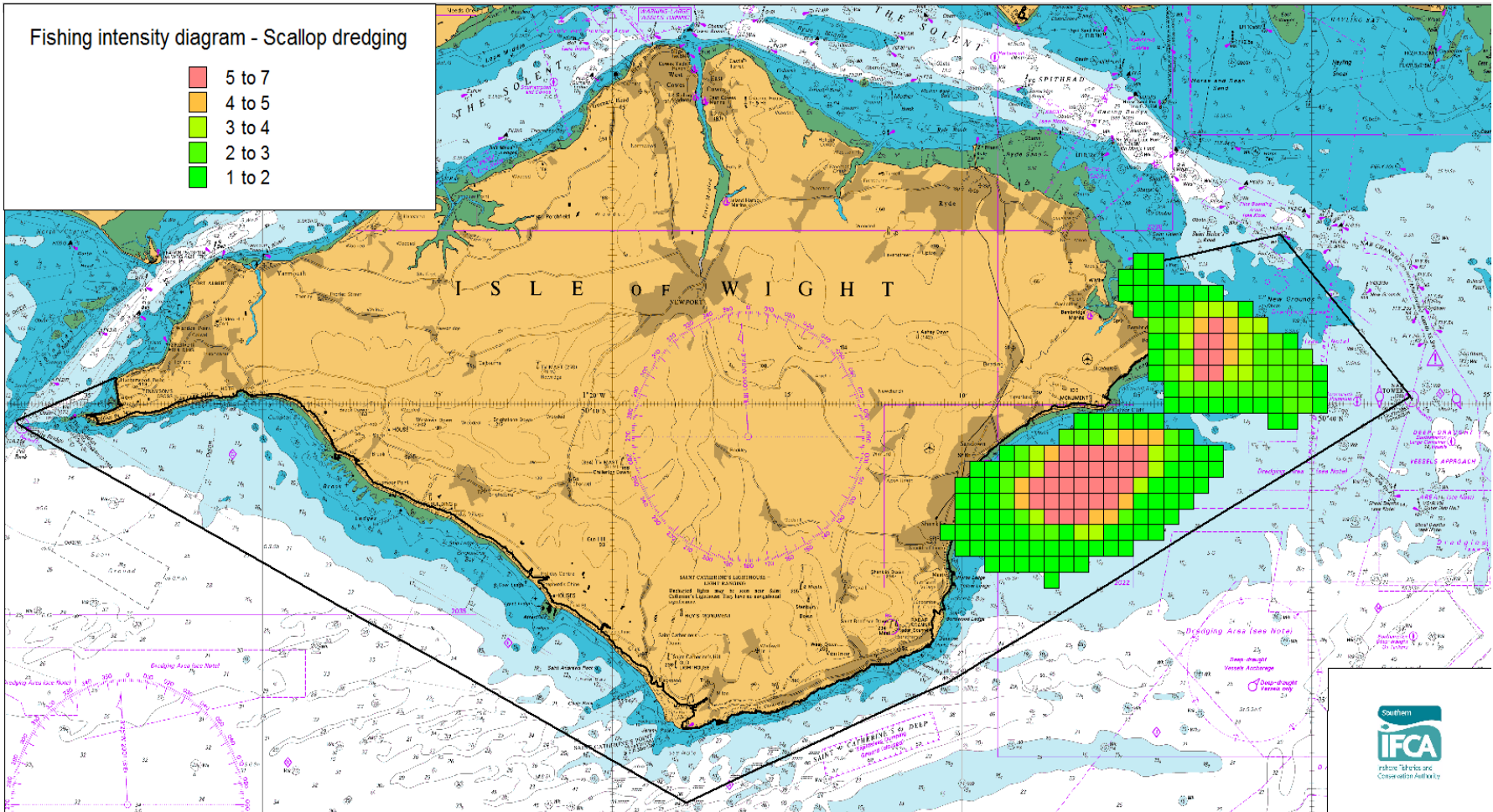
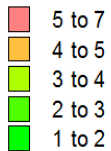


British Crown Copyright, 2013. All rights Reserved. Not to be used for navigation



# Identifying areas of economic importance

Fishing intensity diagram - Scallop dredging

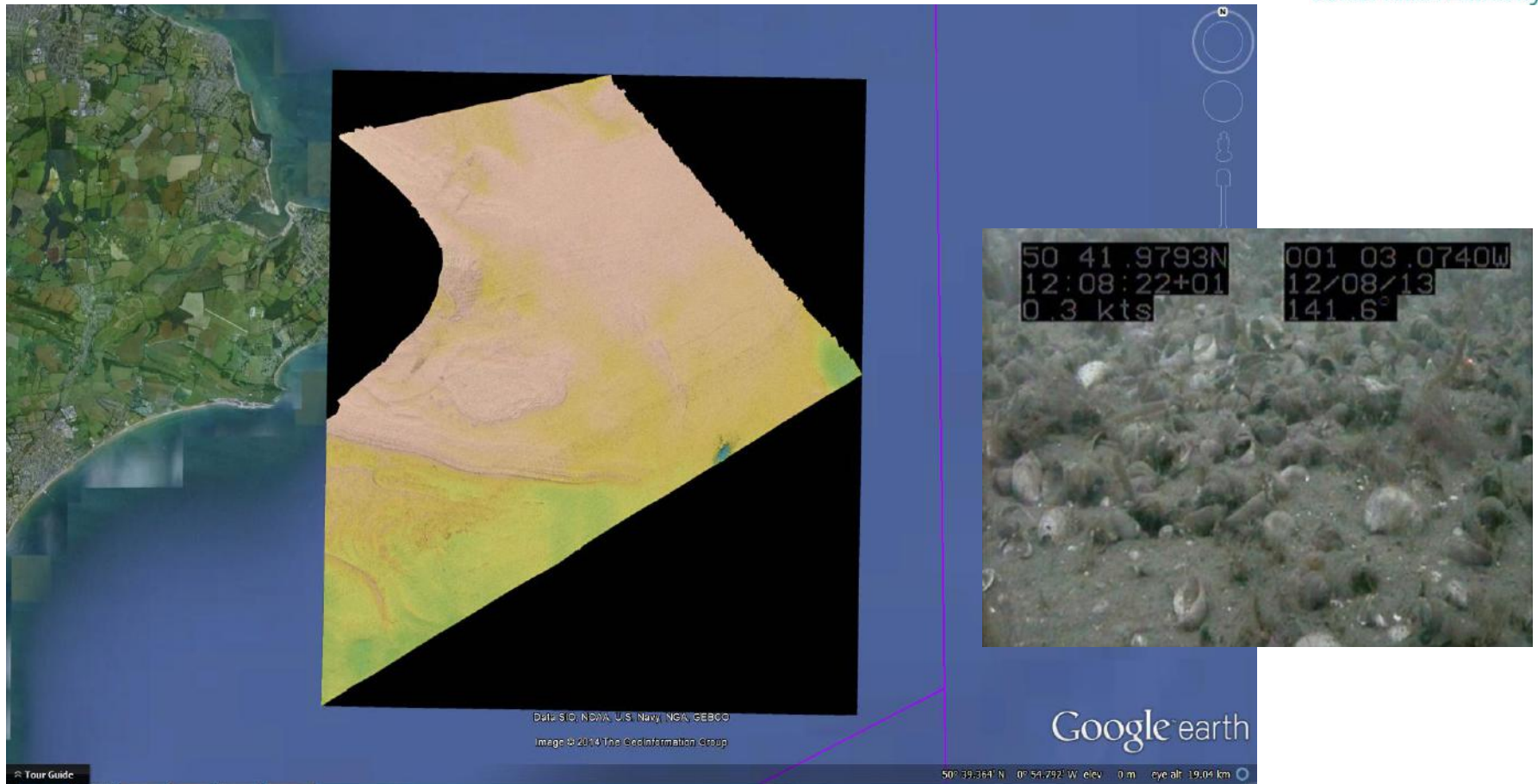








# Refining the location and extent of features



# Marine SACs (blue) with Bottom Towed Fishing Gear (red)





# Bottom Towed Fishing Gear Restrictions in Southern IFCA District

Protection of Portsmouth Harbour SPA - Prohibited to Demersal Towed Gear

Fishing Under Mechanical Power Byelaw - Prohibited to trawl nets under mechanical power 1st May - 1st August

Temporary Closure of Shellfish beds byelaw - Closed to Oystering 01/11/2013 -- 01/11/2014

Temporary Closure of Shellfish beds byelaw - Closed to Oystering 01/12/2013 -- 01/11/2014

Bottom Towed Fishing Gear Byelaw - Prohibited to Towed Gear

Poole Harbour Sensitive Area Byelaw - Prohibited to Shellfish Harvesting by Dredge, Scoop or Rake

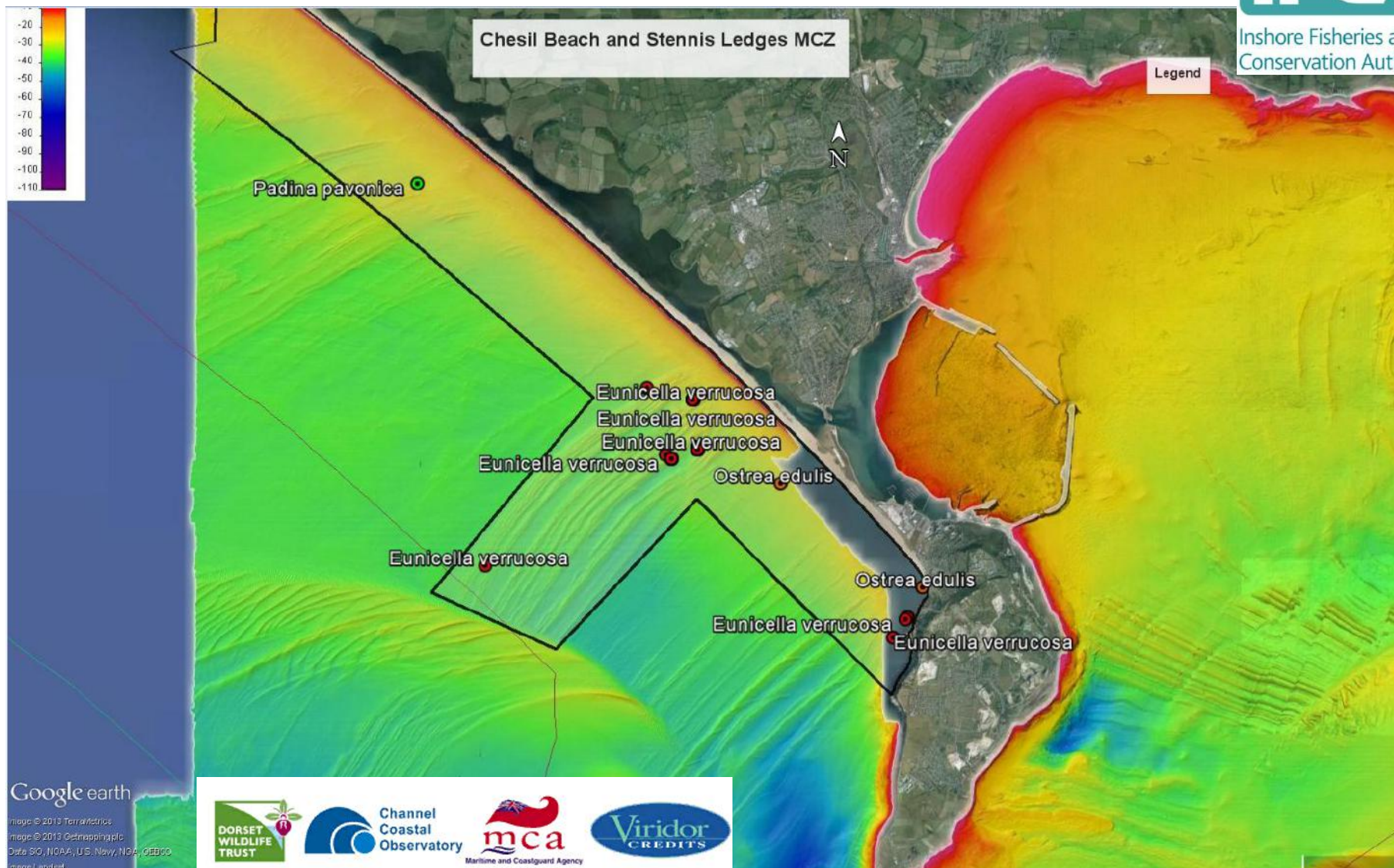
Poole fishery order - requires permit to fish for oysters, mussels and clams within regulated fishery

Poole Harbour Lease Beds



British Crown Copyright, 2013. All rights Reserved. Not to be used for navigation

# Marine Conservation Zones





# Byelaw Review

- Managing aquaculture
- Oyster Restoration
- Achieving Balance
- Revised Approach to EMS – Next Steps
- MCZ management – Next tranche(s)
- Achieving compliance





# Summary

- IFCA Duties and Responsibilities
- The Southern IFCA District
- Delivering the 'Revised Approach' to Fisheries in EMS
- Delivering Fisheries management in MCZs
- Reviewing IFCA Byelaws to deliver balance



# References

O'Dell, J., Doran, J., Allen, C., Willson, R., Dewey, S., 2011. Habitat Mapping – South Wight Maritime SAC 2010/2011, Ground truthing habitat survey. A Report to Natural England by Seastar Survey Ltd. Compiled by O'Dell, J., Doran, J., Allen, C., Willson, R., Dewey, S., March 2011. 79 Pages

O'Dell, J., Axelsson, M., Dewey, S., Allen, C. and Hawes, J. (2013). South Wight Maritime SAC – inshore ground-truthing and habitat survey. A report to Natural England by Seastar Survey Ltd. 95 pages.

Armstrong, M. Brown, A. Hargreaves J. Hyder K. Pilgrim-Morrison, S. Munday, M. Proctor, S. Roberts, A. Williamson, K. (2013) Sea Angling 2012 – a survey of recreational sea angling activity and economic value in England.

# Acknowledgements

Peter Tinsely, Dorset Wildlife Trust  
Crew of MFV John Edward  
Natural England Southern Regional Seas Team