



National  
Trust

---

# Shifting Shores — adapting to change

.....practical lessons from a decade of coastal adaptation

**Phil Dyke**  
Coast and Marine Adviser, National Trust

Coastal Futures – January 2015



## **Our Ask through Shifting Shores:**

- **Take the long view**
- **Adapt to change**
- **Work together**
- **Work with nature**



National  
Trust

# Key Messages

A decade of Shifting Shores – time to quicken our  
**PACE**

**Politics:** transcend the short term political perspective – we owe this to ourselves but more so to future generations

**Adaptation:** Work, through tangible projects (break through projects) to tell stories and demonstrate the validity of adaptation as a plausible companion to defense.

**Community:** Engage, engage and engage with communities and stakeholders on shoreline management ..... exploring rising sea levels, extremes of weather and what it will mean for us.

**Evidence:** make timely decisions based on the best available evidence – if we wait for ‘perfect data’ it will be too late





# Why the NATIONAL TRUST ?

NT owns 10% of  
coastline of England,  
Wales & N. Ireland  
(742 miles)







# Pace - Politics: transcending short term thinking

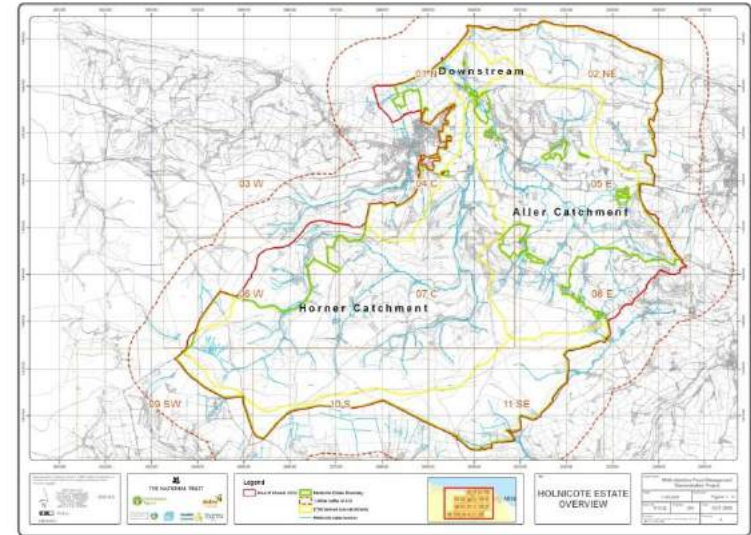


Rail Engineer – March 2014

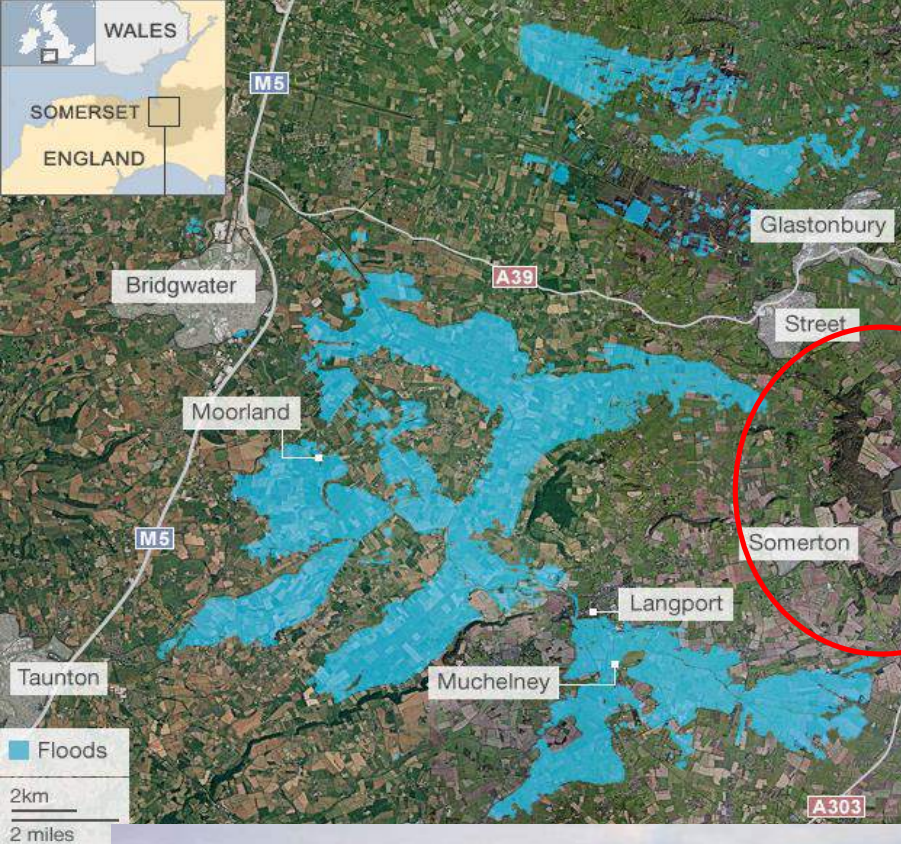




# Politics — transcending short term thinking; NT Case study: the Holnicote Flood Management Project







40 miles away.....







# Politics – transcending short-term thinking

‘The real conflict at the beach is not between the sea and the shore[...] but between man and nature. On the beach, nature has achieved a dynamic equilibrium that is alien to man and his static sense of equilibrium. Once a line has been established, whether it is a shoreline or a property line, man unreasonably expects it to stay put’

Gary Soucie

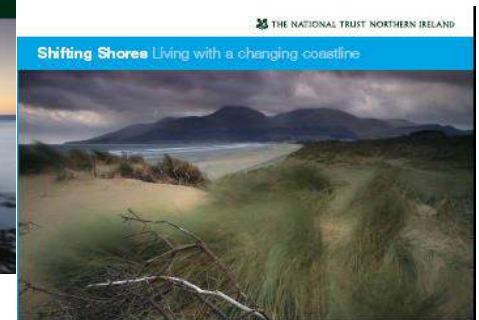
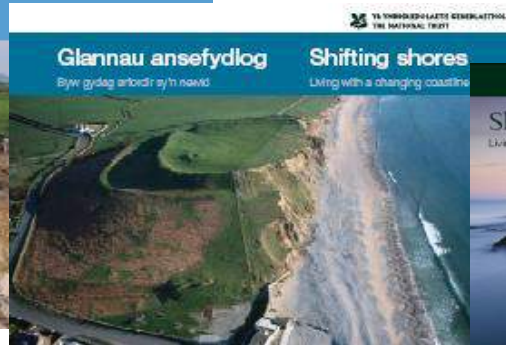


# PACE – Adaptation: break through projects and telling stories

2005



2008



2014



## Key principles

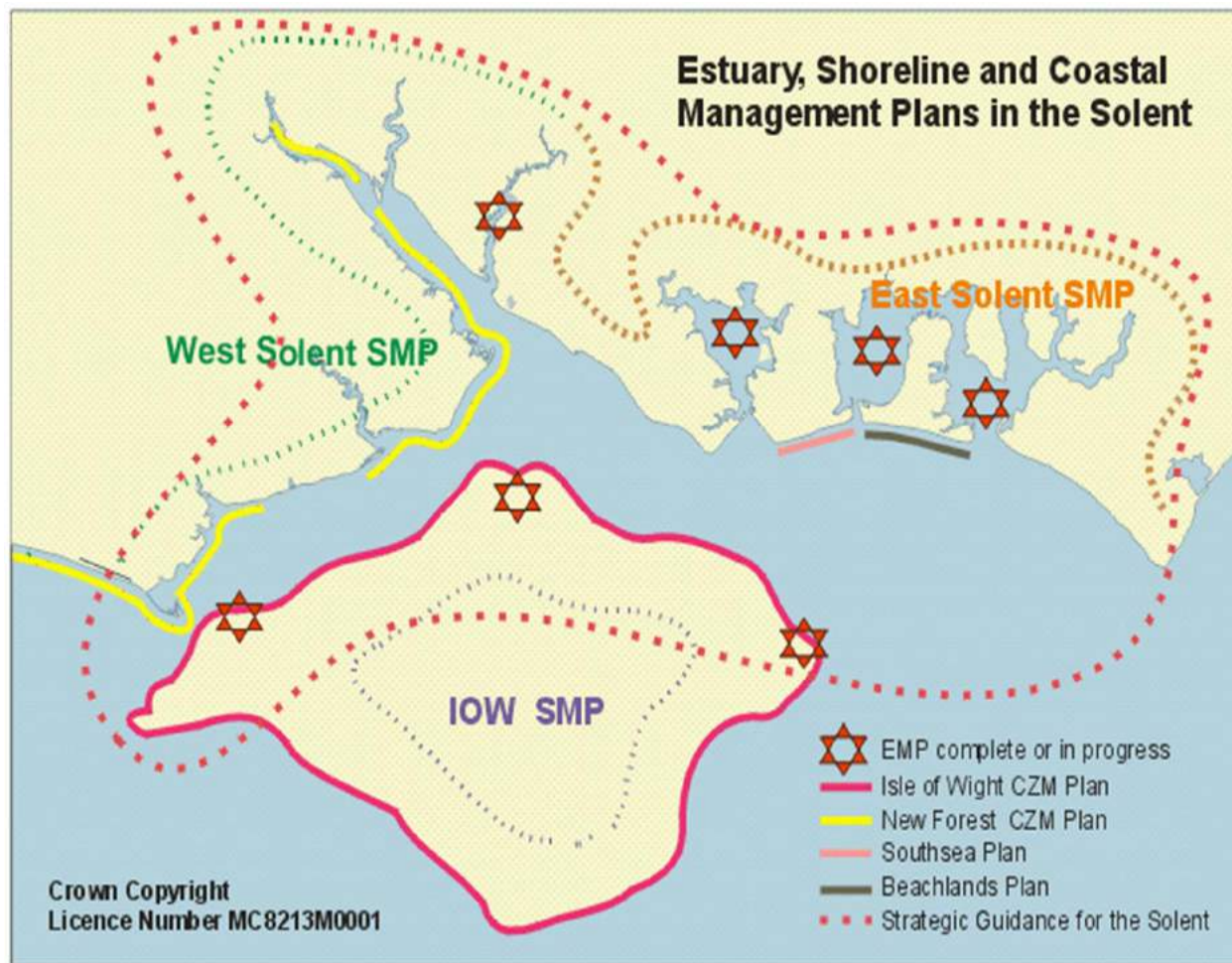
- Long-term planning essential
- Think & act in wider context
- Work with not against nature
- ***Promote an adaptive approach***
- Solutions need partnership
- Public involvement is critical

[www.nationaltrust.org.uk](http://www.nationaltrust.org.uk)





# Adaptation - moving beyond defend or do nothing:



- SMP/EMP
- Coastal monitoring
- Strategic Planning
- Advent of marine planning
- Pathfinders
- FCERMS
- CCMA?
- Time Ltd PP?
- Roll back?

ADAPTATION?



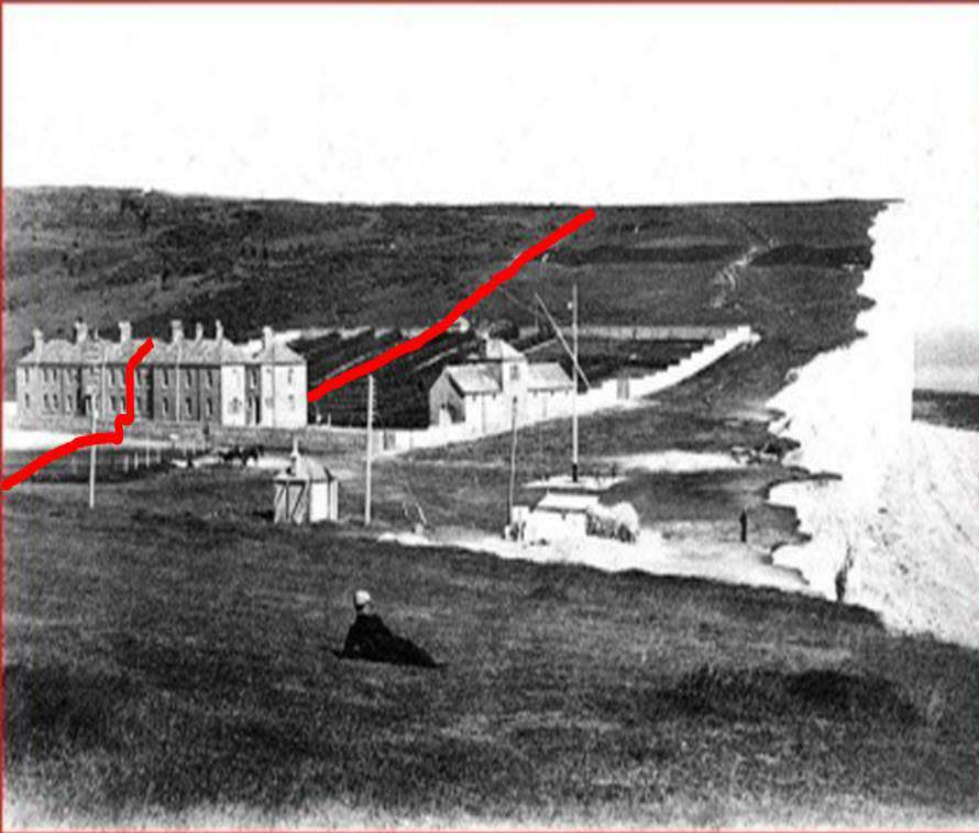
# Adaptation - NT Case Study: roll-back at Birling Gap, East Sussex







# Birling Gap











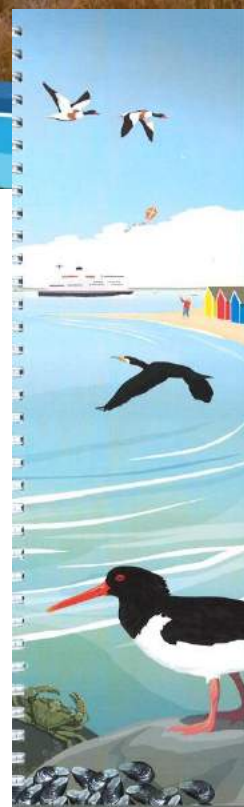
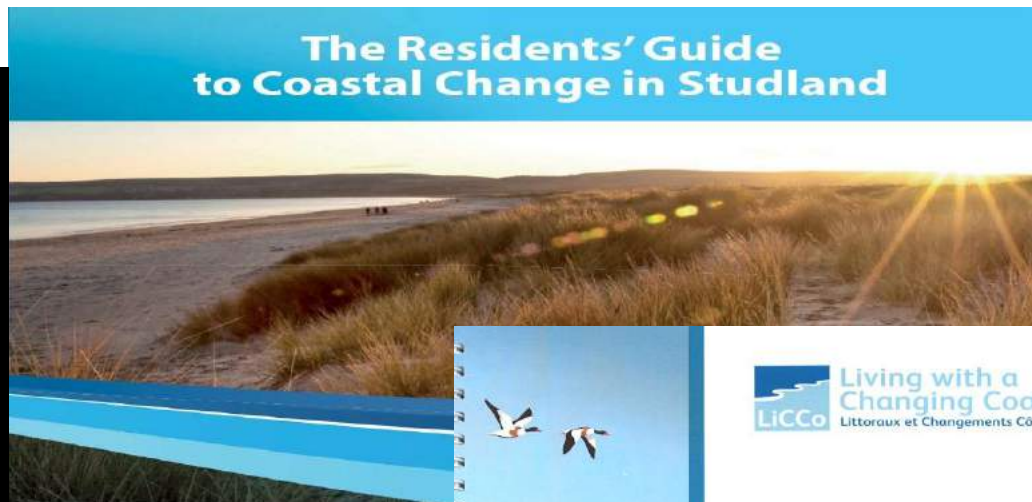
Birling Gap





National  
Trust

# PACE - Community and engagement: NT Case Study – Studland, Dorset



**LICCo** Living with a  
Changing Coast  
Littoraux et Changements Côtiers

Living with a Changing Coast:  
Secondary learning &  
teaching programme

**Exe Estuary &  
Poole Harbour**

By David Weatherly

Devon  
County Council

Living with a Changing Coast

National  
Trust

Environment  
Agency

EXE  
Estuary &  
Poole Harbour





# Community - increasing awareness





100 years ago





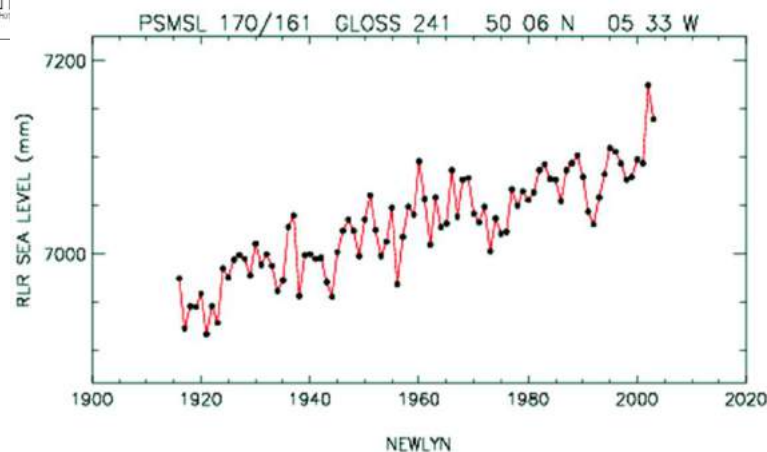
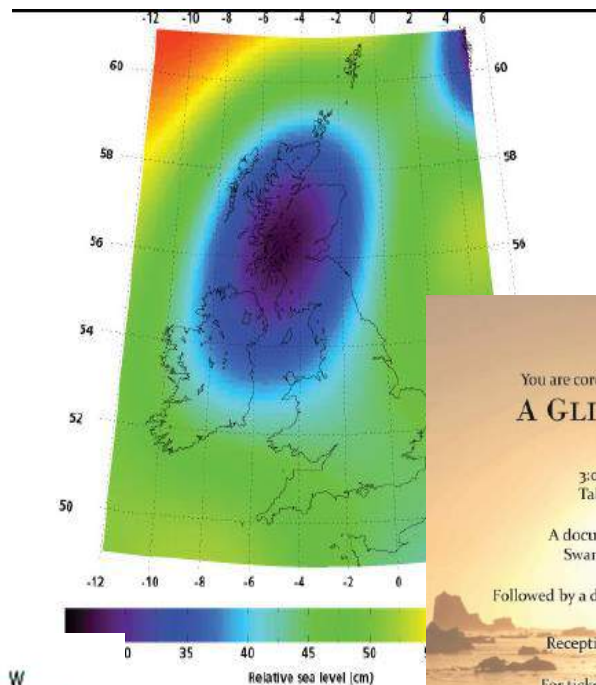
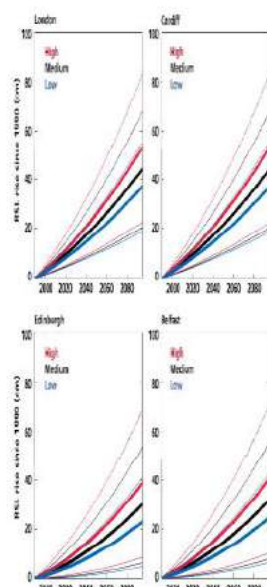
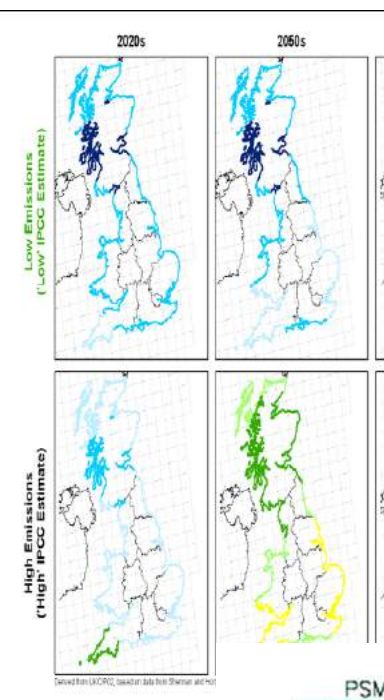


# One hundred years from now





# PAC E: Evidence – Global



sea level change (cm) around  
 ury. This map shows estimate  
 nge (i.e. sea level rise pl  
 ts) by 2095, using the 'central  
 emissions scenario. © UK Cl

Swansea University  
 Prifysgol Abertawe

You are cordially invited to attend the first screening of:

## A GLIMPSE OF GREENLAND

THE DISAPPEARING ICE

3:00pm Tuesday 22nd November 2011  
 Taliesin Theatre, Swansea University

A documentary film that highlights the work of  
 Swansea Glaciology Group in SE Greenland

Followed by a drinks reception to celebrate the work of the group

Reception from 4:30pm Wallace Building Foyer

For tickets please email your name and address to  
[greenland@swansea.ac.uk](mailto:greenland@swansea.ac.uk)

Produced in collaboration with 196 Productions Ltd.

Part of Interdisciplinary Research Week

GLIMPSE

The Llewellyn Trust

EPSRC  
 Engineering and Physical Sciences  
 Research Council

NATURAL  
 ENVIRONMENT  
 RESEARCH COUNCIL





## Evidence - Regional

**SMP data +**

**Regional  
Coastal  
Monitoring  
Programmes**

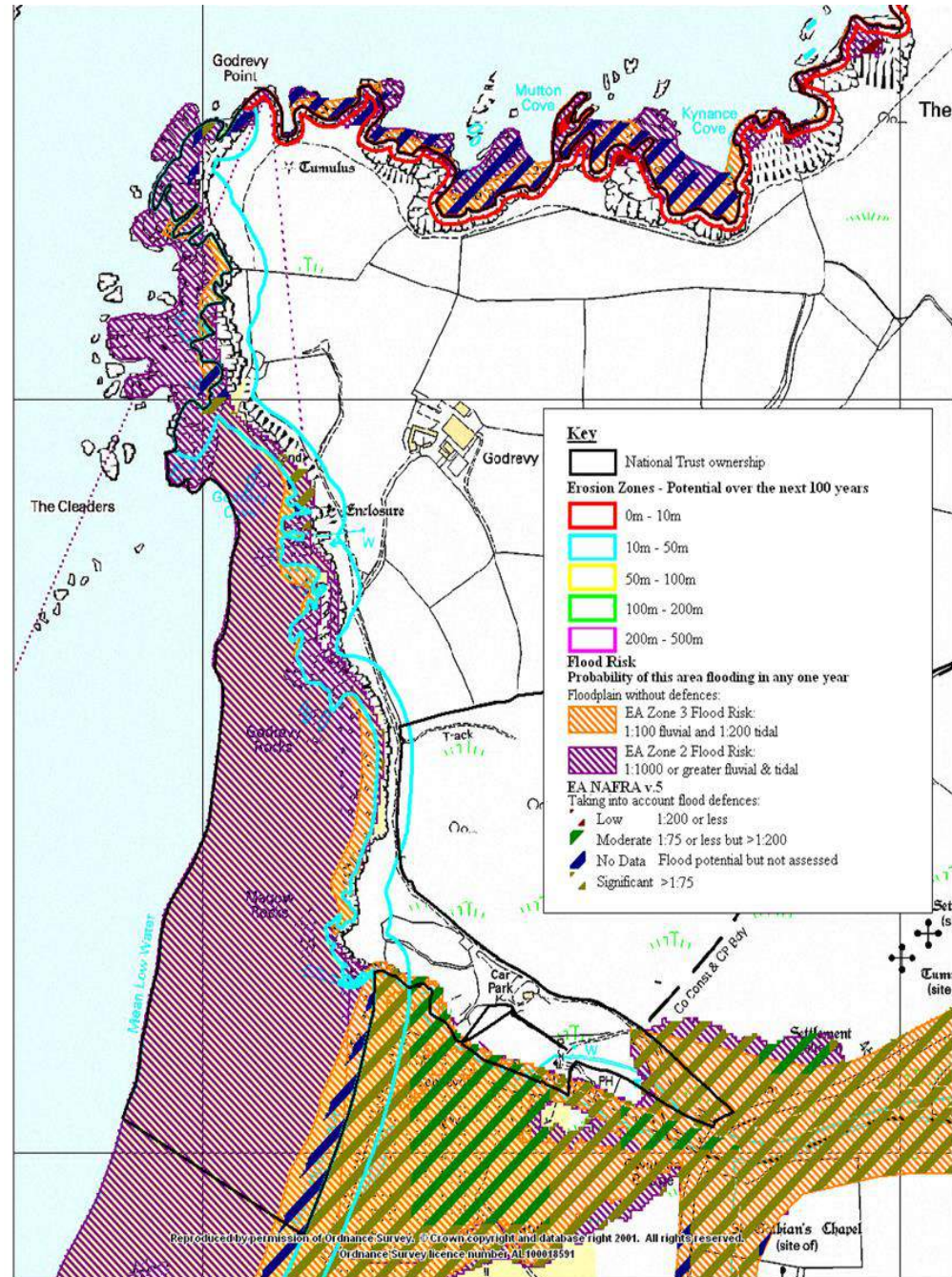
**=**

**Value for  
money**



# Evidence – Local

## National Trust Coastal Risk Assessment (CRA)







National  
Trust

# Summary: key messages arising from ten years of coastal adaptation - PACE

**Politics:** transcend the short term political perspective – we owe this to ourselves but more so to future generations

**Adaptation:** Work, through tangible projects (break through projects) to tell stories and demonstrate the validity of adaptation as a plausible companion to defense.

**Community:** Engage, engage and engage with communities and stakeholders on shoreline management ..... exploring rising sea levels, extremes of weather and what it will mean for us.

**Evidence:** make timely decisions based on the best available evidence – if we wait for ‘perfect data’ it will be too late

[phil.dyke@nationaltrust.org.uk](mailto:phil.dyke@nationaltrust.org.uk)

