

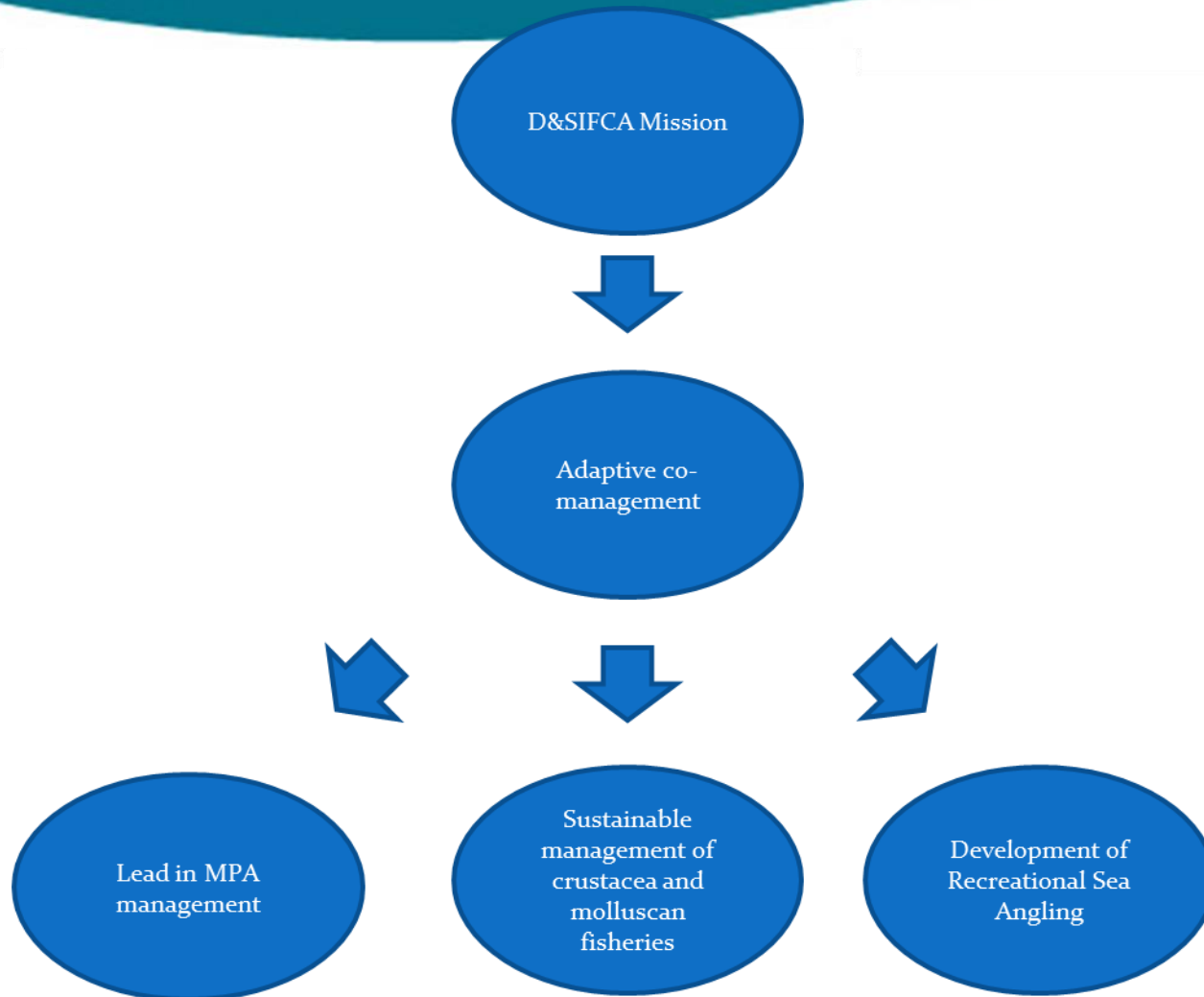
Devon & Severn Inshore Fisheries and Conservation Authority



Inshore Management in Practice

Tim Robbins
Chief Officer

D&SIFCA Management Plan

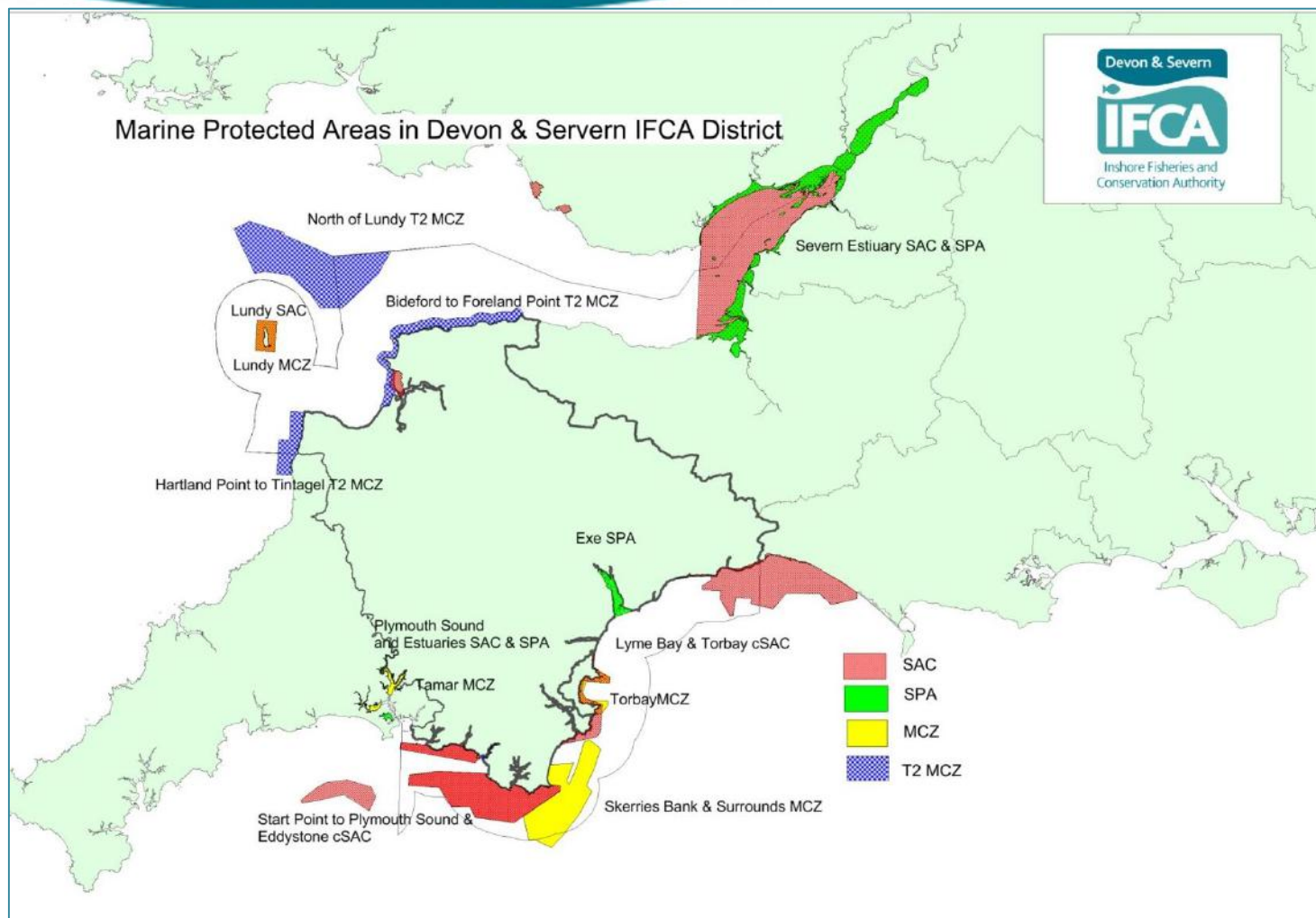


Devon & Severn



Inshore Fisheries and Conservation Authority

D&SIFCA District

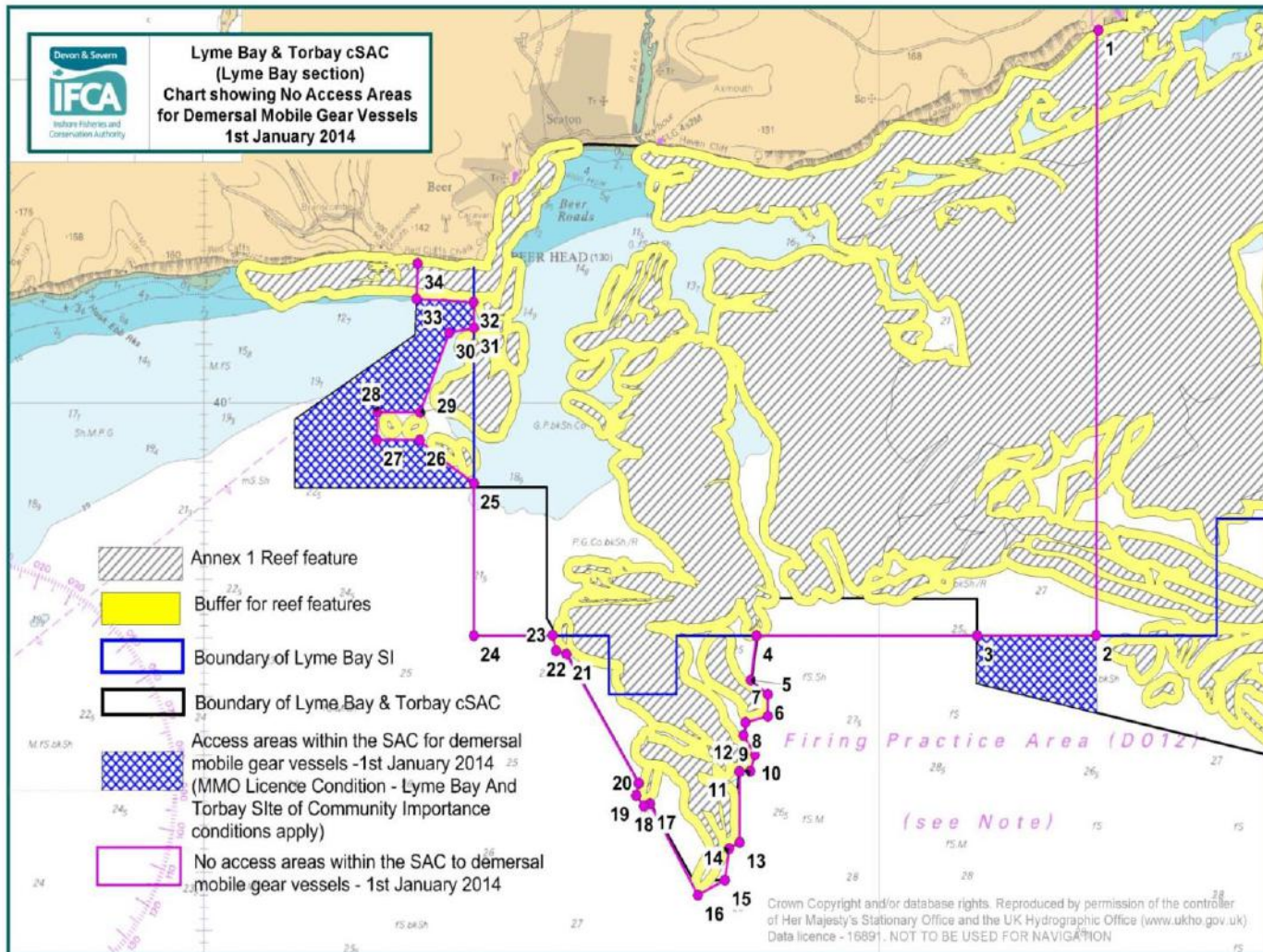


Devon & Severn



Inshore Fisheries and Conservation Authority

Mobile Gear Permitting Byelaw 2014

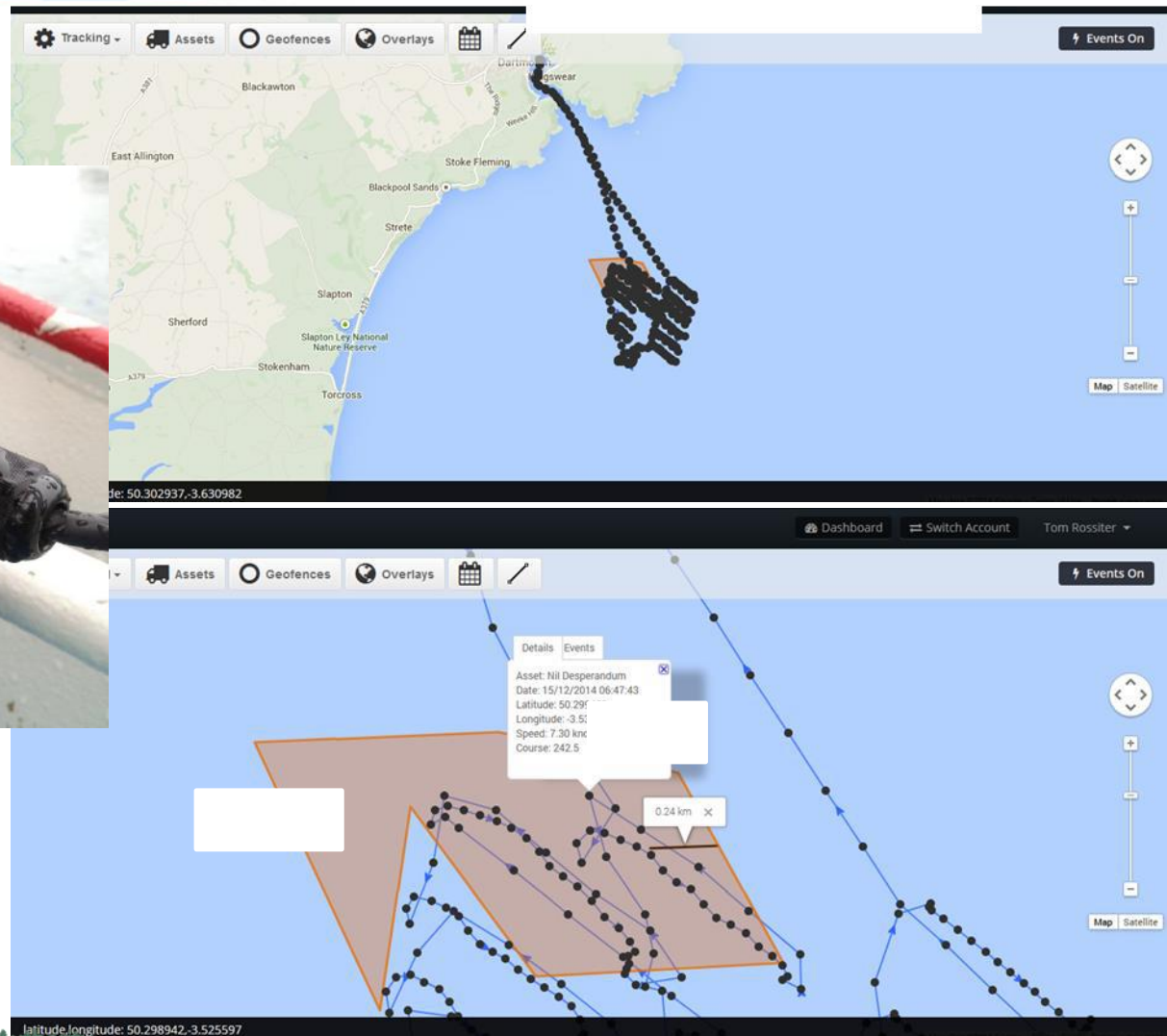


Devon & Severn



Inshore Fisheries and Conservation Authority

Inshore Vessel Monitoring System

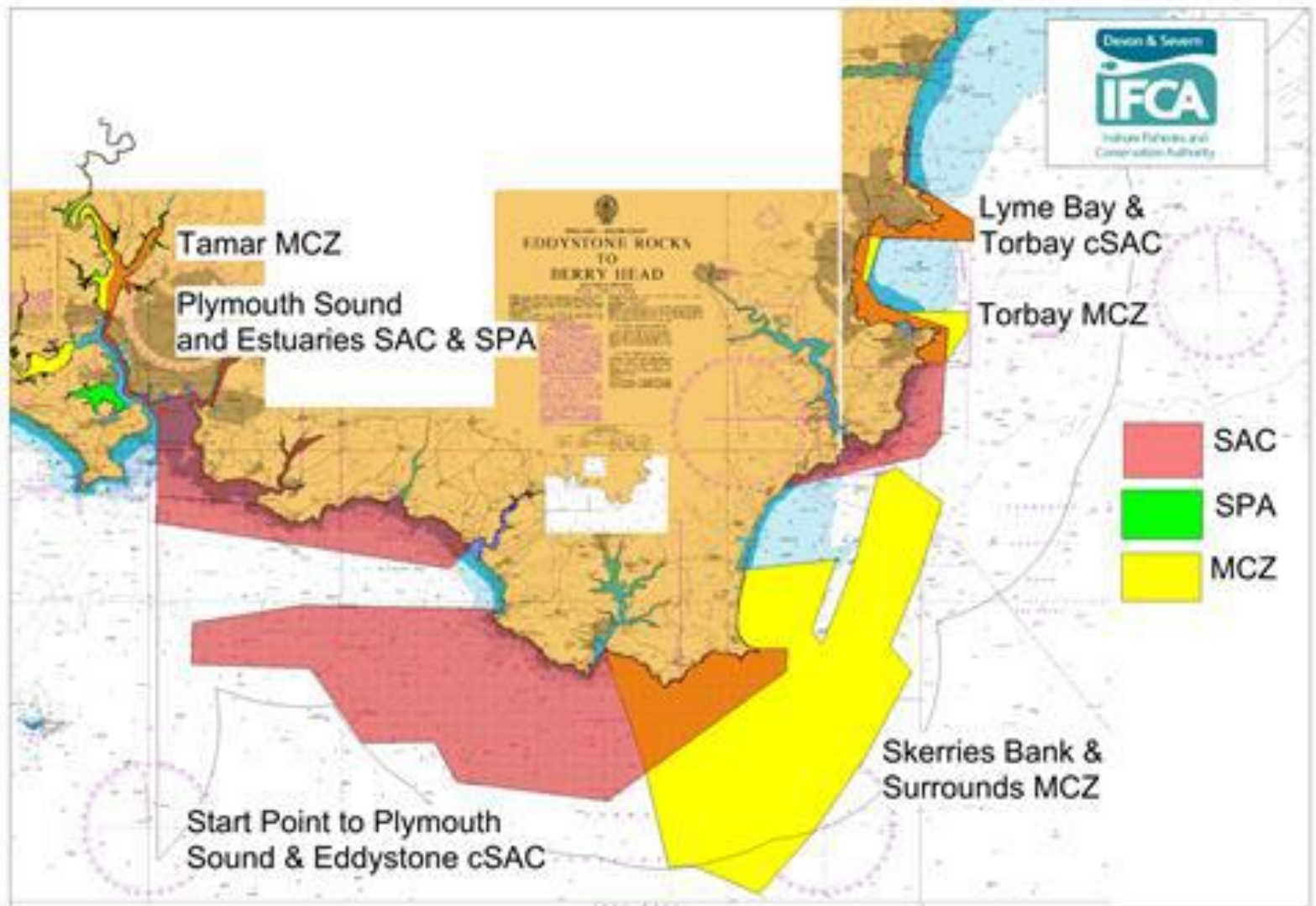


Devon & Severn

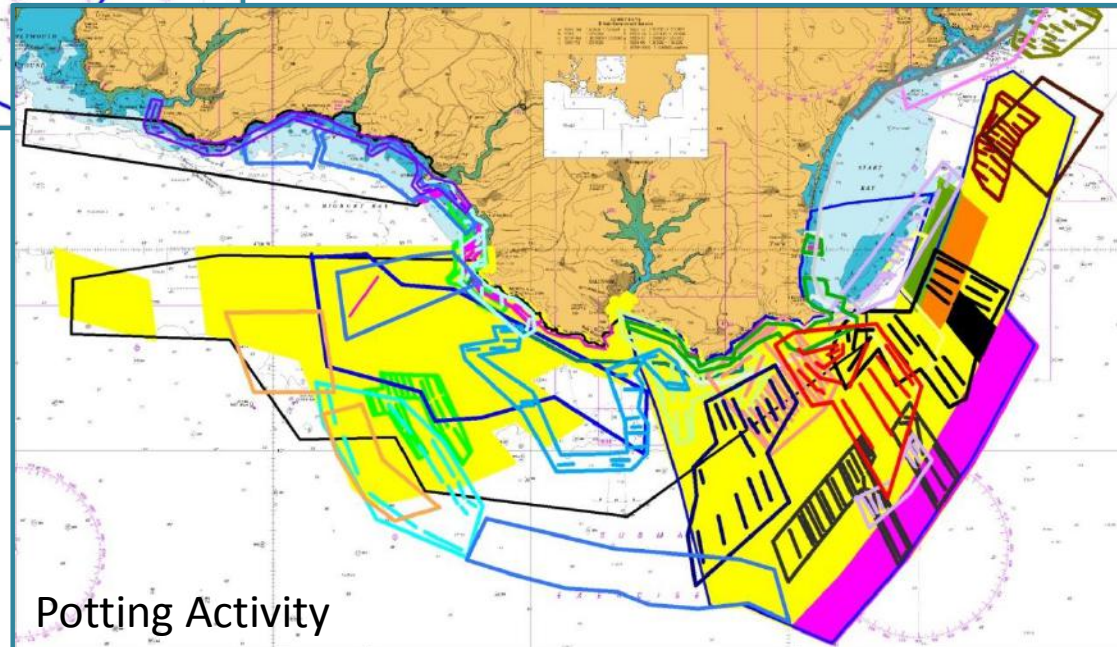
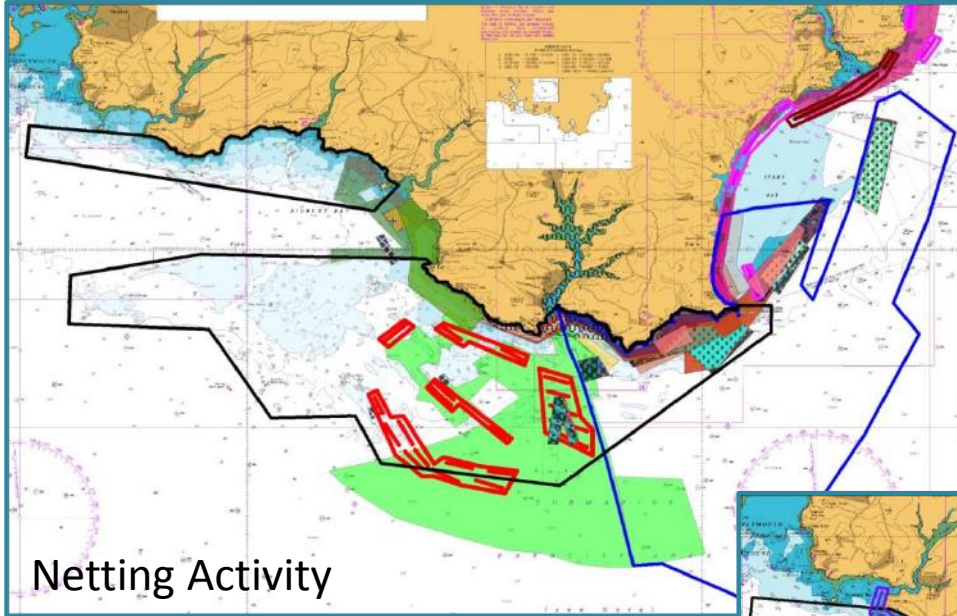


Inshore Fisheries and Conservation Authority

Marine Protected Areas



Fixed Gear Survey Results



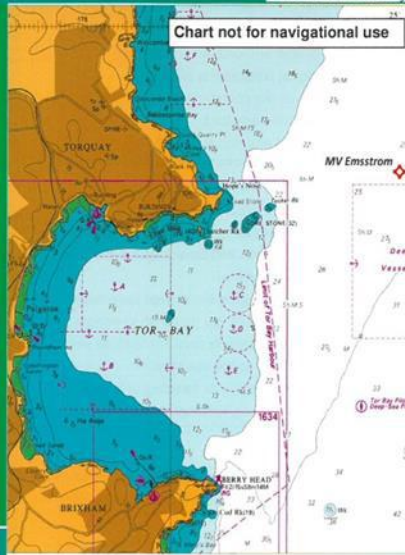
Recreational Sea Angling Zones

DEVON AND SEVERN IFCA



Emsstrom Wreck Angling Zone

This Angling Zone has been developed by Devon and Severn IFCA in recognition of the importance and value of recreational sea angling and to secure the wreck for current and future angling activities. The Angling Zone is managed by a voluntary Code of Conduct—please adhere to the rules set out overleaf.



Fishing Mark: A 77m vessel which sank in 2013.
Species: The fish fauna is still developing but is likely to include cod, pollack, conger and bass

Points	Latitude	Longitude
1	50° 28.17'N	003° 24.86'W
2	50° 28.10'N	003° 24.76'W
3	50° 28.03'N	003° 24.86'W
4	50° 28.10'N	003° 24.97'W

DEVON AND SEVERN IFCA



Burnham, Berrow & Brean Angling Zone

This Angling Zone has been developed by Devon and Severn IFCA in recognition of the importance and value of sea angling and to secure the area for current and future angling activities.

The Angling Zone is managed by a voluntary Code of Conduct—please adhere to the rules set out overleaf.



Fishing Marks: Sea wall, sandflats, mudflats, rocky reefs
Species: Cod, conger, whiting, sole, flounder, thornback ray

Point Number	Latitude	Longitude
1	51° 19.80'N	002° 59.17'W
2	51° 19.80'N	003° 02.36'W
3	51° 13.64'N	003° 02.36'W
4	50° 13.64'N	003° 00.11'W

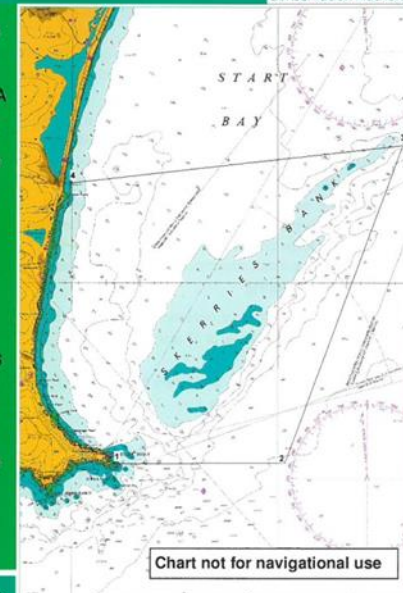
DEVON AND SEVERN IFCA



Skerries Bank Angling Zone

This Angling Zone has been developed by Devon and Severn IFCA in recognition of the importance and value of sea angling and to secure the area for current and future angling activities.

The Angling Zone is managed by a voluntary Code of Conduct—please adhere to the rules set out overleaf.



Fishing Marks: Offshore sand banks and rocky reefs, sandy and rocky shore
Species: Plaice, blonde ray, spotted ray

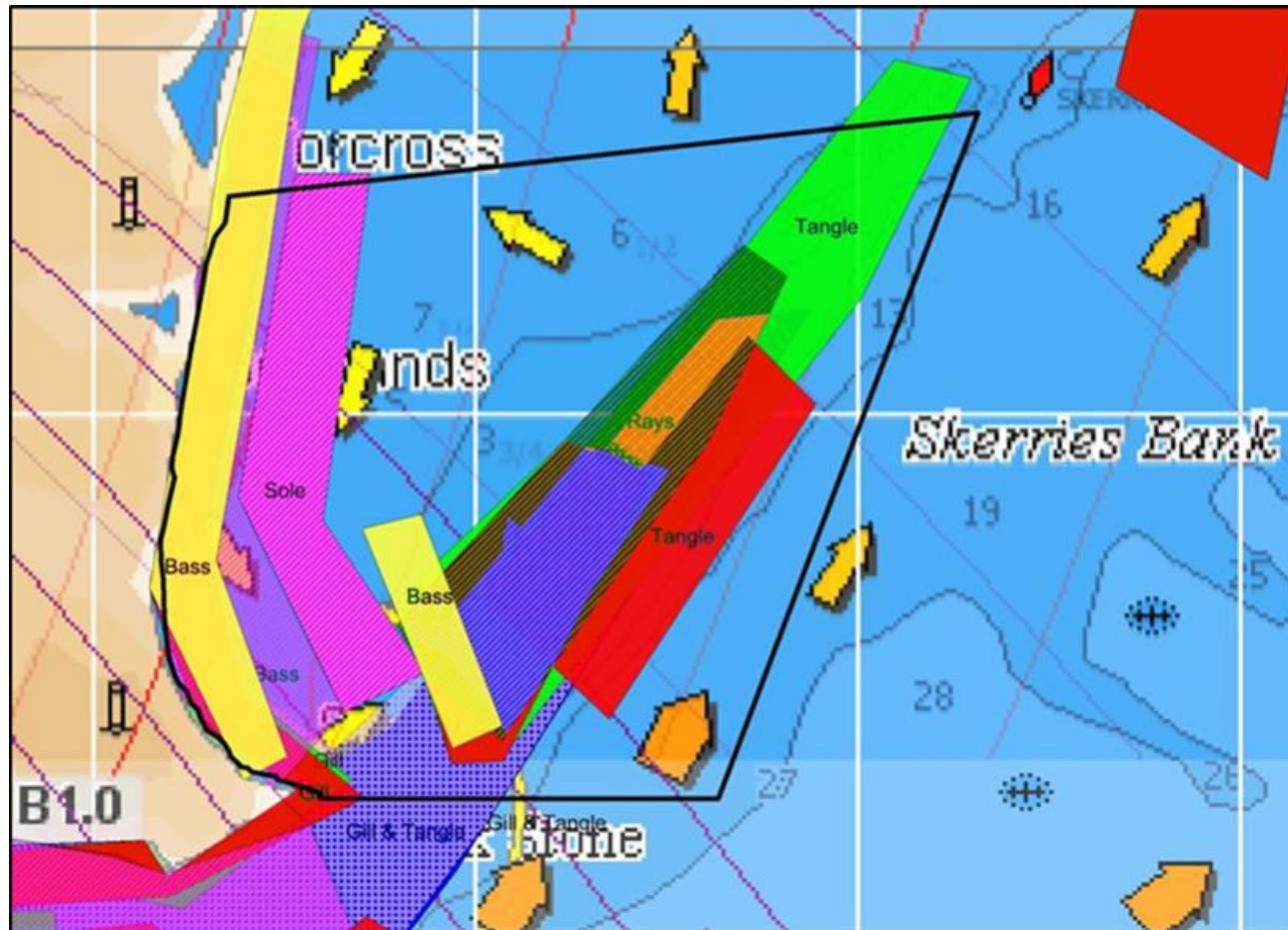
Point number	Latitude	Longitude
1	50°13.344' N	003°38.538' W
2	50°13.344' N	003°35.943' W
3	50°16.282' N	003°34.180' W
4	50°15.949' N	003°39.118' W

Devon & Severn



Inshore Fisheries and Conservation Authority

Start Bay Angling Zone



Devon & Severn



Inshore Fisheries and Conservation Authority



t.robbins@devonandsevernifca.gov.uk
www.devonandsevernifca.gov.uk

Devon & Severn



Inshore Fisheries and Conservation Authority