

A Vision for our Coast: Partnership approaches From Origin Into the Ocean



Coastal Futures 2018

Amy Pryor

Chair of Coastal Partnerships Network

Thames Estuary Partnership



Coastal Partnerships

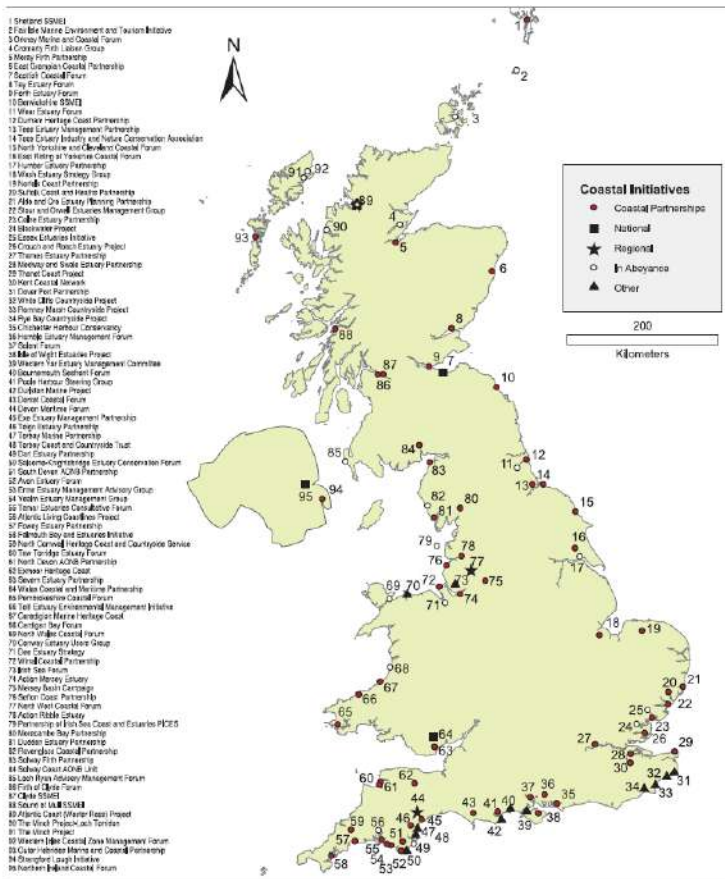
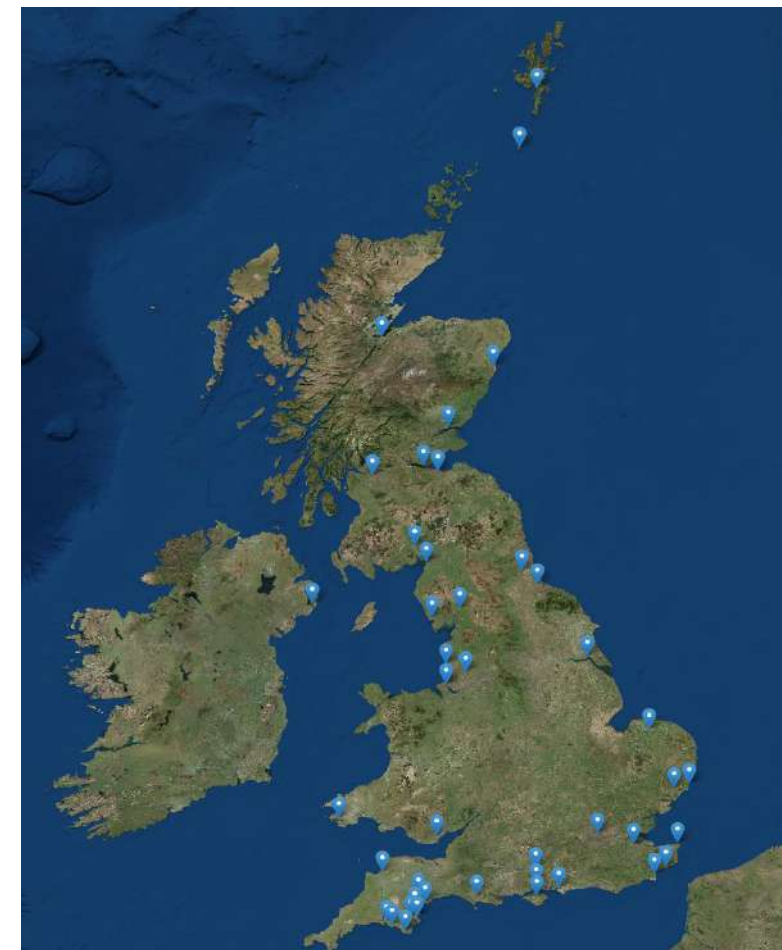


Figure 1 Coastal initiatives in the UK
Note: Sectoral initiatives not shown (see Table 1)



**Coastal Partnerships
2012**



**Coastal Partnerships
2018**

**Coastal Partnerships
2008**



Coastal Partnerships work



Strategy and research

Suffolk Nature Strategy, FCRM and Marine Pioneer



consultation/networking support

The North West Awards for Coastal Excellence



CLLD and convening

North Thames Fisheries Local Action Group



Landscape scale planning and delivery –

Health and wellbeing integrated with coastal defence work



Heritage Coast
Sunderland-Durham-Hartlepool

Community engagement and project support -

Restoration of coastal landscape/beach quality - regeneration



Data and Business opportunity generation

Wales Activity Mapping



project funding and awareness raising

Litter Free Coast and Sea Somerset

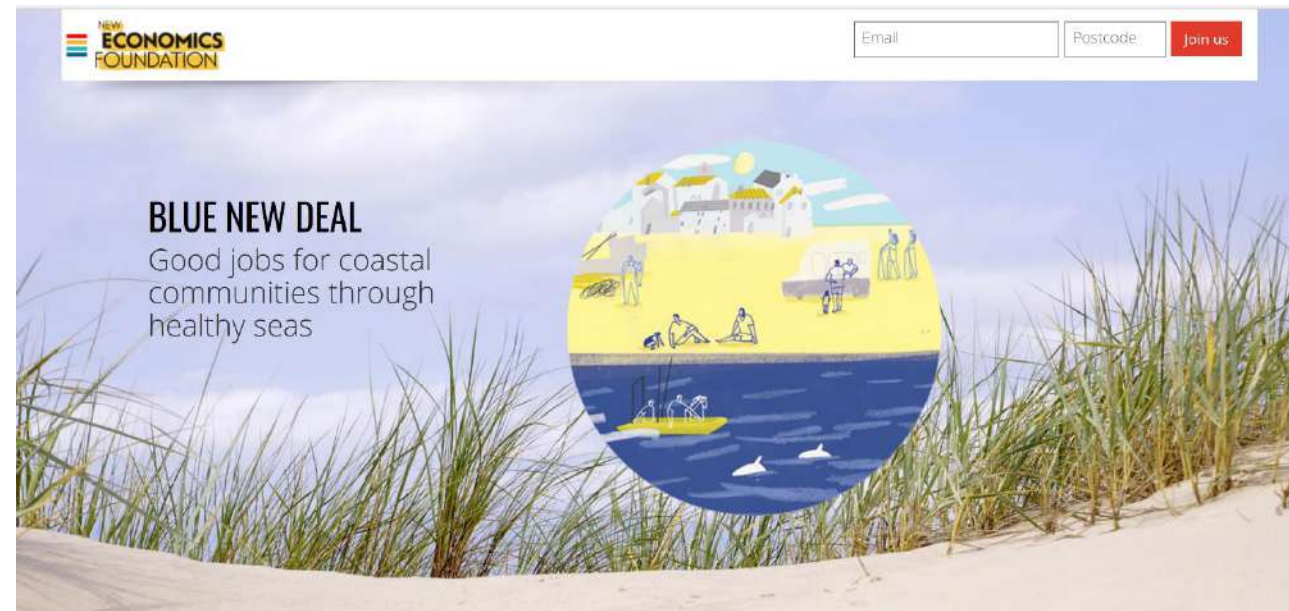


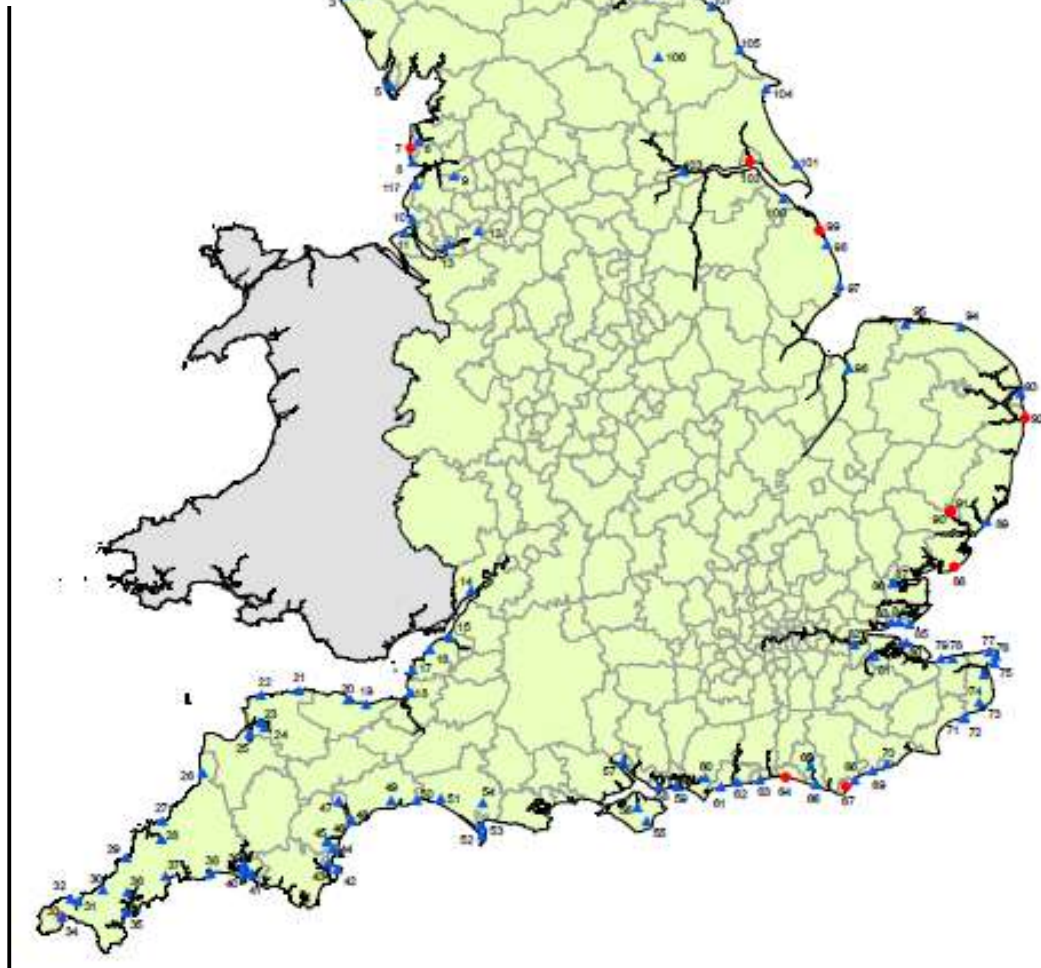
Coastal Communities

- Disconnect between coast and hinterland
- Low to no recognition of value of and needs at the coast – LEPs
- High deprivation levels, intergenerational unemployment
- Tourism or single industry reliant

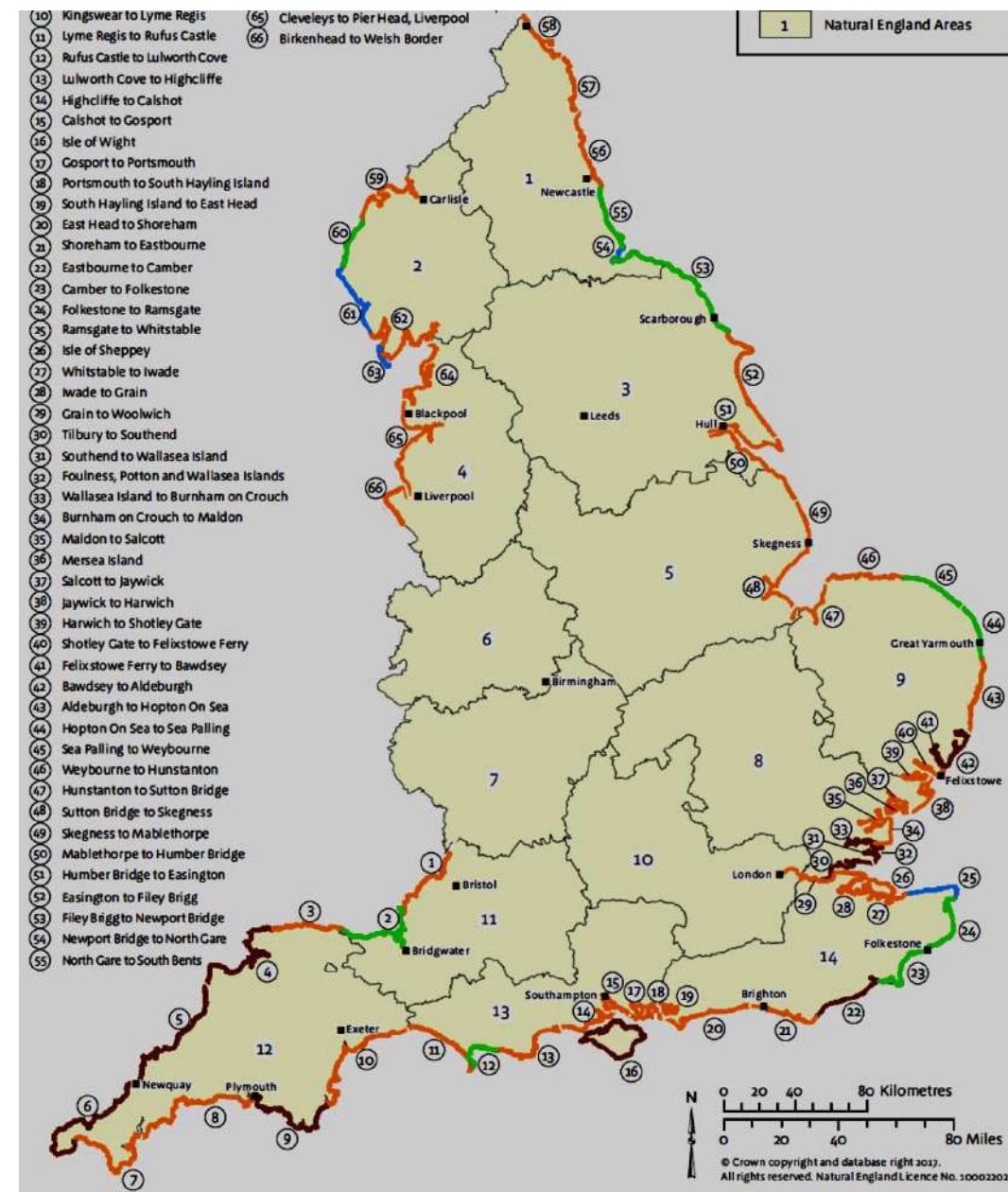


2011 Census: Coastal Communities





Coastal Community Teams



England Coast Path



National Coastal Groups/Fora

- Local Government Association Coastal SIG – LPA. Coastal Adaptation
- Coastal Communities Alliance – Tourism, economics, CCTs
- National Coastal Tourism Academy – Tourism, research
- Coastal Culture Network – new kid on the block, arts and culture
- Water Leaders Group - WFD/CaBA
- NEF and BND – new language/lens; nothing new but reinvigorated conversations and about to become active

Opportunities to create a unified Coastal Voice through collaboration



Somebody Else's Problem?

A SEP is something we can't see, or don't see, or our brain doesn't let us see because we think it's Somebody Else's Problem. That's what SEP means. Somebody Else's Problem. The brain just edits out, it's like a blind spot.

– Douglas Adams

- Integration and coordination needed:
 - geographically;
 - horizontally (across different sectors)
 - vertically (across different levels of decision-making community to central government).
- Resources needed – scale and complexity; unsustainable/limited without



Coastal Partnerships Network (CPN)

Aims:

- Representing CPs and their interests at regional, national and European levels
- Increasing the representation of the value of the work of Coastal Partnerships to their supporting partners, other coastal stakeholders and relevant initiatives including policy development
- Facilitating a joined up approach to the management of coastal areas
- Providing opportunities for learning and influence, strengthening and supporting Coastal Partnership Officers in their work

From Origin Into the Ocean

- CaBA - integrated approaches achieving more than sum of its parts, innovative funding partnerships, community engagement
- Freshwater focus to date
- “source to sea” **to** the sea isn’t right as the sea (coastal waters) are **included** = **From Origin Into the Ocean**
- E.g. Chichester Harbour Seaview Vision

What we are trying to achieve with others
From this... To this...

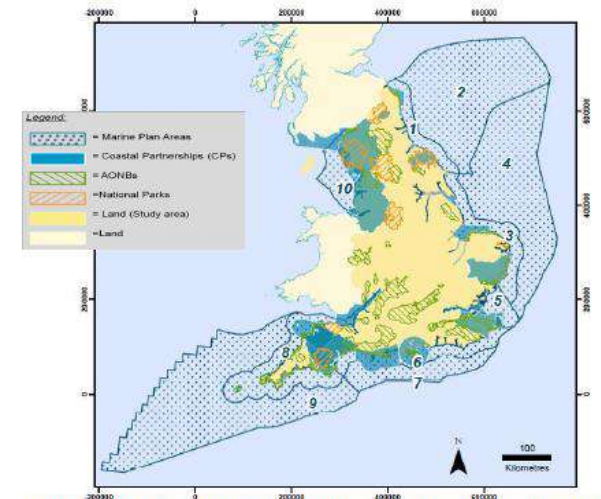
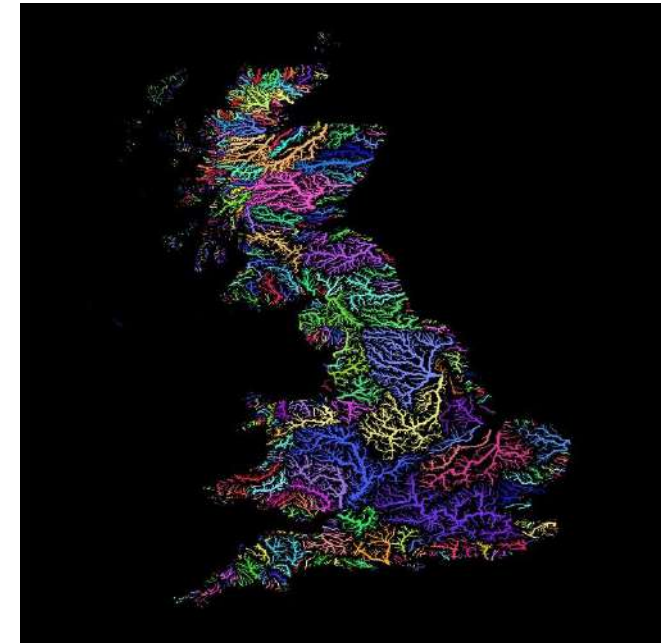


Figure 2: Country wide spatial distribution of participating Coastal Partnerships in England. Source: © Natural England copyright. Contains Ordnance Survey data © Crown copyright and database right [2012]. Other data from CPN members contains Ordnance Survey data © Crown copyright and database right [2012].

From Origin Into the Ocean



- Holistic approach to recognise all values of the coast, its people and the ocean, not just the economic ones.
- Coast needs to have an identity in its own right, not split between terrestrial & marine policy & management structures.
- Coastal Voice = Coastal Policy
- Marine Resources Policy



Summary of opportunities

- Brexit – new legislations/policies - Advocacy
- MSP - encourage working upstream and downstream
- Coastal Path – physically linking – pathway for coordination and collaboration
- 25 Year Plan
- CCTs - pushing LEPs to get coastal higher up the LEP agenda; regional collaboration
- CaBA – restoration, flood defence, research, monitoring, citizen science and engagement



What Next for CPN?

- National Audit underway
- Action Plan 2017
- Seeking CIC Status – professionalise and strengthen
- Coastal Officer to support work, create greater, consistent connection and coordination
- Annual Coastal Partnerships Forum
- CaBA/CPN Conference in Autumn 2018
- Refreshed website – partner searches, celebrate successes = more visibility for the work we're all doing
- Ensure we're still linked to EU after Brexit
- Advocacy and policy influence
- **Coastal Challenge Summit – 24th April Europe House, London**

CPs very much have a role – locally grown, nationally important

a.pryor@ucl.ac.uk

www.coastalpartnershipnetwork.org.uk

