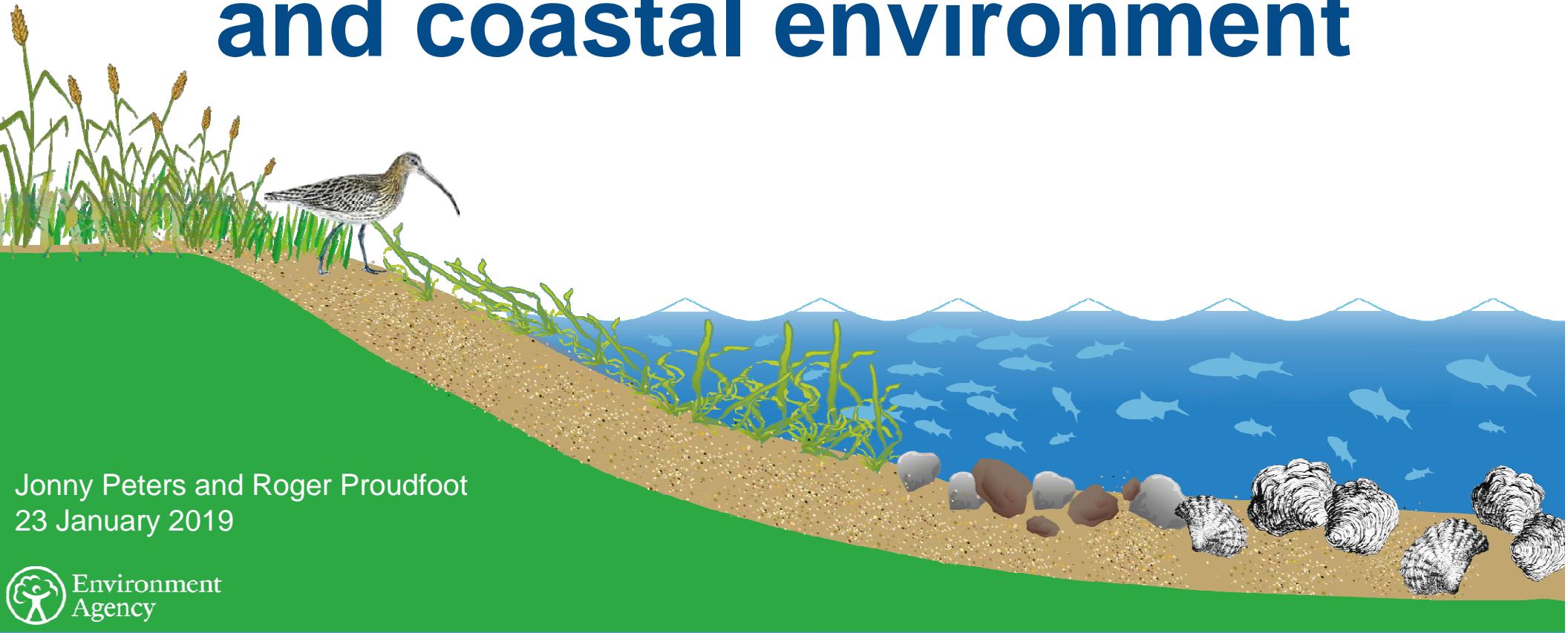


Restoring our estuarine and coastal environment



Jonny Peters and Roger Proudfoot
23 January 2019

Key points

- Despite significant efforts, our estuarine and coastal habitats remain far from their natural state
- The 25 year environment plan and concepts like net gain challenge us to do something different
- More than ever, we need the benefits those habitats can give
- Now is the time for concerted, active intervention

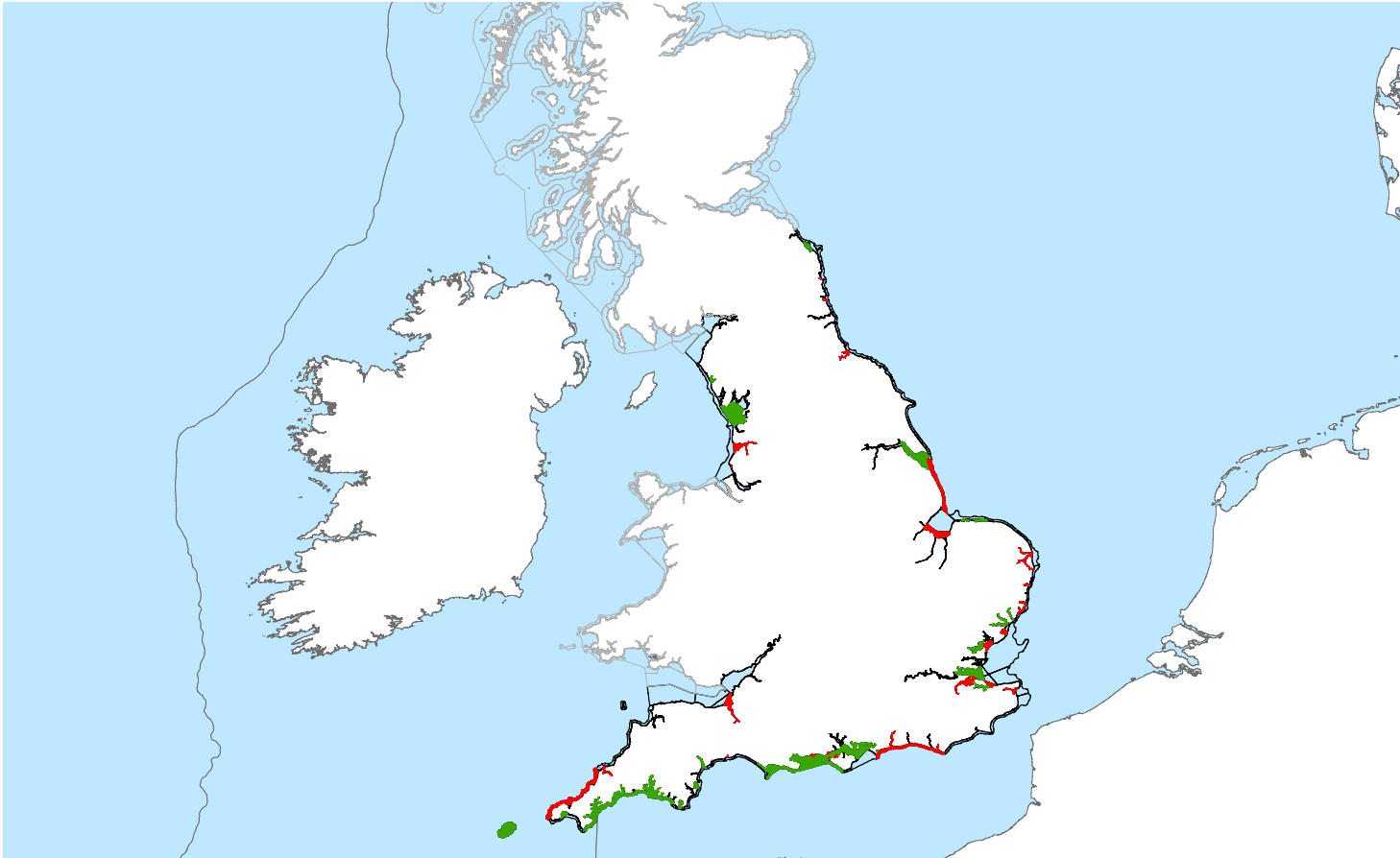
Seagrass meadows

Seagrass meadows

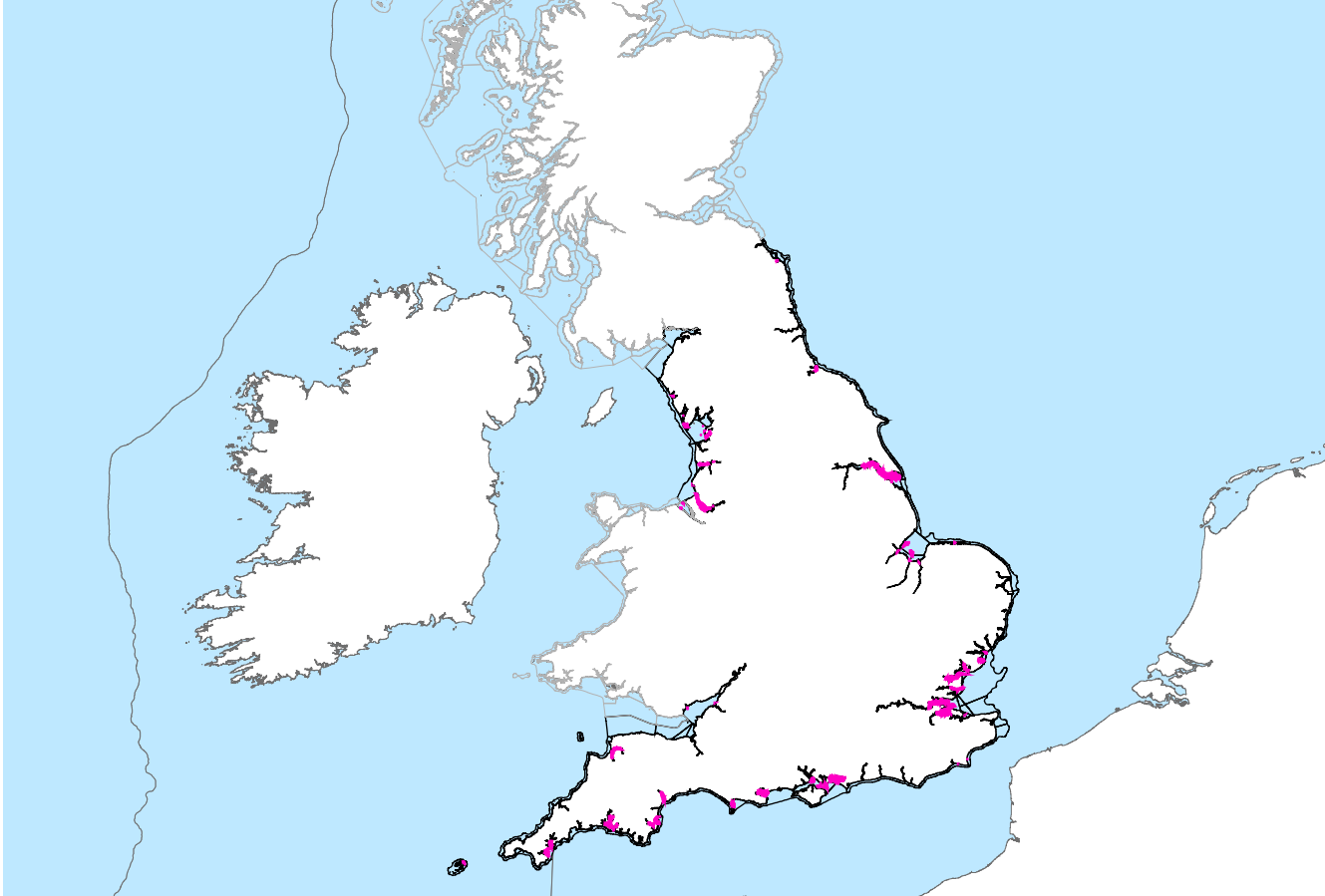


Intertidal seagrass
Pembroke
Mike Best

Seagrass meadows



Seagrass meadows



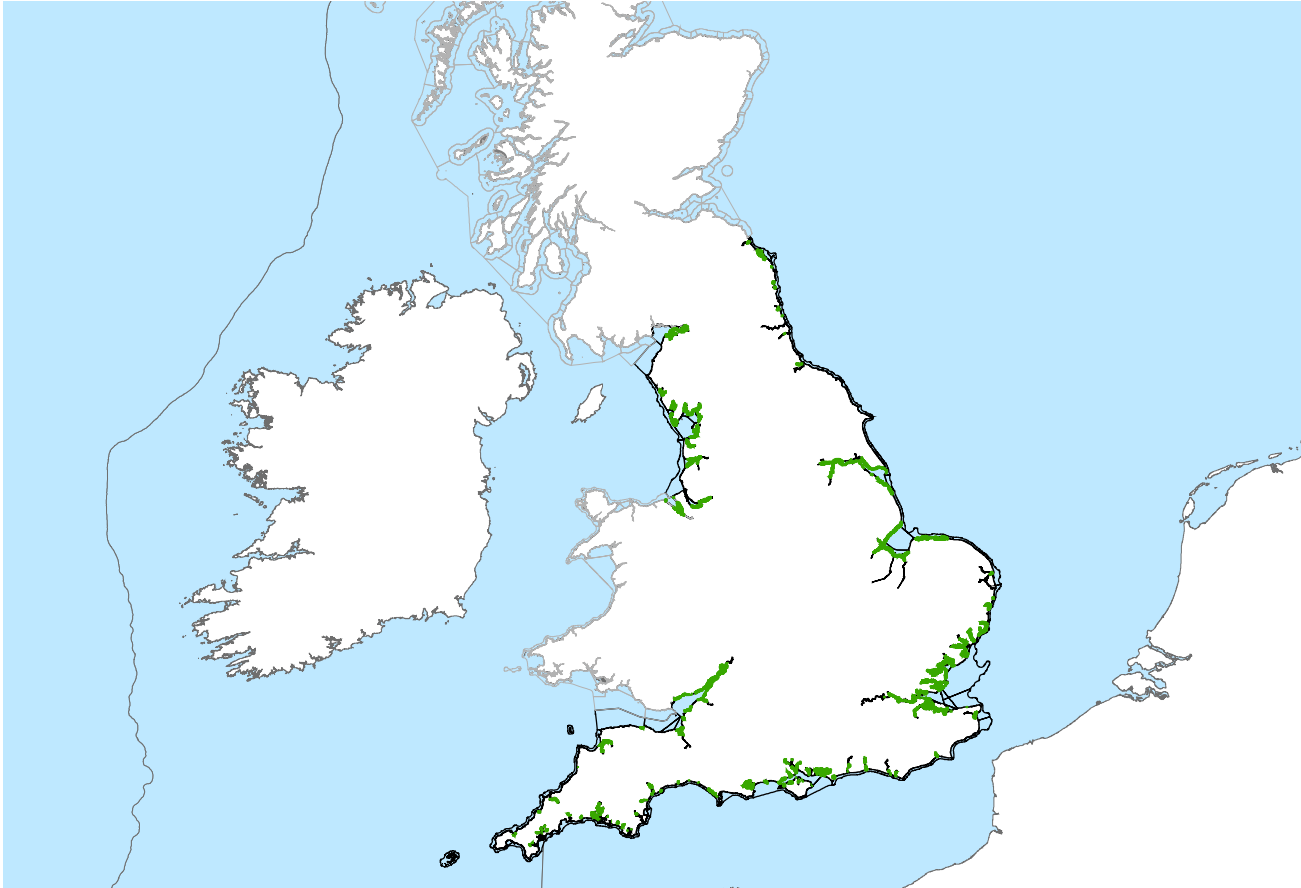
Saltmarsh

Saltmarsh



Saltmarsh
Lincolnshire
Mike Best

Saltmarsh



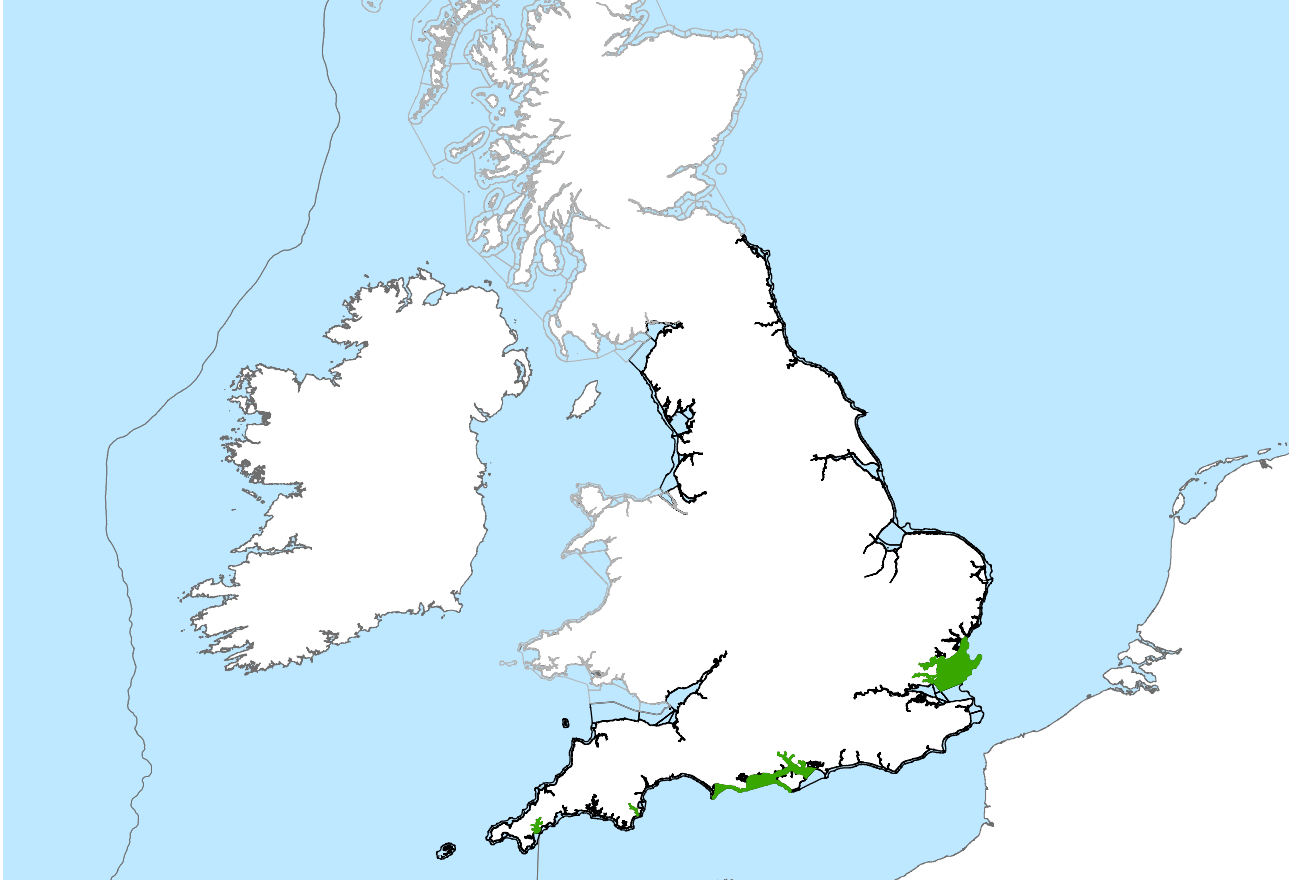
Oyster reef

Oyster reef



Picture from:
<http://www.langstoneharbour.org.uk/environment-news.php>

Oyster reef



Where next?

Where next?

- REMEMARE (REstore MEadows, MARshes and REefs) Programme beginning in England
- Restoring Estuarine and Coastal Habitats (REACH) in the North East Atlantic – Conference on 16 July



Questions

Roger Proudfoot

Manager – Estuaries and Coasts Planning

roger.proudfoot@environment-agency.gov.uk

Jonny Peters

Senior Advisor – Estuaries and Coasts Planning

jonny.peters@environment-agency.gov.uk