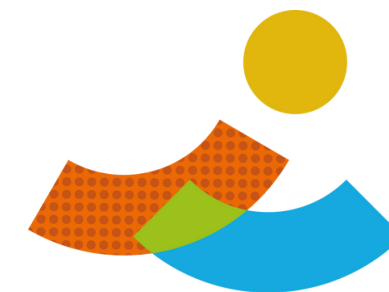




Coastal Futures Conference 2025

The Path to 2030



**Coastal
Futures
2025**

Delivered by OCF

29 & 30 January 2025 | London & online

 www.coastal-futures.net

 Ocean and Coastal Futures

 #CoastalFutures25

Q&A

www.slido.com

For online and in-person attendees

Code: CoastalFutures25

Wifi: CoastalFutures25

PW: CF_Conf25

Platinum Sponsor



**UNIVERSITY OF
PLYMOUTH**



Coastal Futures Conference 2025

The Path to 2030

Session Two

Sustainable Seas

Can we meet the 2030 targets whilst growing a sustainable blue economy?

Chair

Rachel Solomon Williams,
Executive Director, Aldersgate Group



**Coastal Futures
Conference 2025**

The Path to 2030

Session Two

Sustainable Seas

Marine Delivery Routemap:

Integrating nature, clean power, and
industry for a thriving marine
economy and communities

Jamie Moore,
The Crown Estate



**Coastal Futures
Conference 2025**
The Path to 2030

Marine Delivery Routemap

Integrating nature, clean power, and industry for a thriving marine economy and communities

29 Jan 2025

 Marine Delivery
Routemap

 **THE CROWN
ESTATE**



THE CROWN ESTATE

Creating lasting and shared prosperity for the nation

A vision for the future use of the seabed to 2050, working in partnership

Accelerating Clean Energy projects and planning for critical UK infrastructure needs

Deliver business confidence from strategic planning through project development to operation, by planning out spatial conflicts upfront and actively de-risking development - supporting projects in the right place at the right time with the needs of all sectors informing the design

Placing Nature at the centre of decision-making

Optimise the use of the marine space, with partners & Government, protecting high priority areas for nature and delivering a plan, created in partnership, for a healthy, flourishing marine environment'

Creating onshore opportunities from offshore development

Inform the strategic plans of regional and local elected bodies, driving investment and economic growth and enabling thriving communities

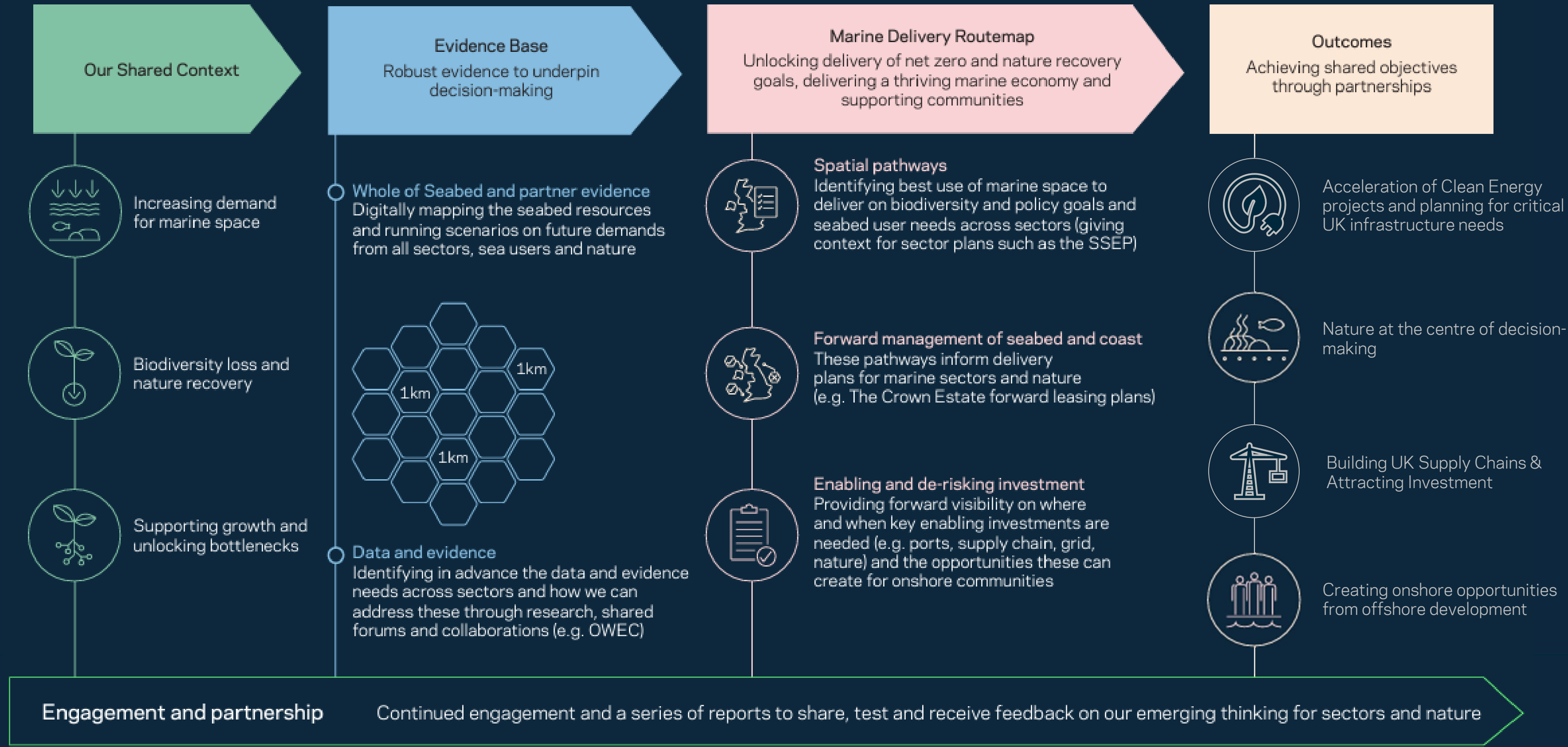
Building UK Supply Chains & Attracting Investment

UK Jobs secured through visibility of industry development pipelines to 2050, crowding in global investment and driving innovation in the stable, reliable UK market



Marine Delivery Routemap

A long-term strategy for the marine space to meet net zero and nature recovery goals, delivering a thriving marine economy and supporting communities



2050 Example Scenario

REGIONAL DEVELOPMENT

Provide visibility of the linked onshore and regional opportunities/needs from offshore development (e.g. ports, grid, supply chain, research hubs, nature)

EMERGING TECHNOLOGIES (e.g. HYDROGEN)

Identifying areas of opportunity and allocating space for market-led projects

TIDAL STREAM & RANGE

Building understanding of system value and environmental impacts

- Energy
- Minerals
- Linear Assets
- Storage
- Nature
- Selected Ports
- Renewable Energy Zone Limit and UK Continental Shelf
- UKHO Territorial Waters Limits

FISHING

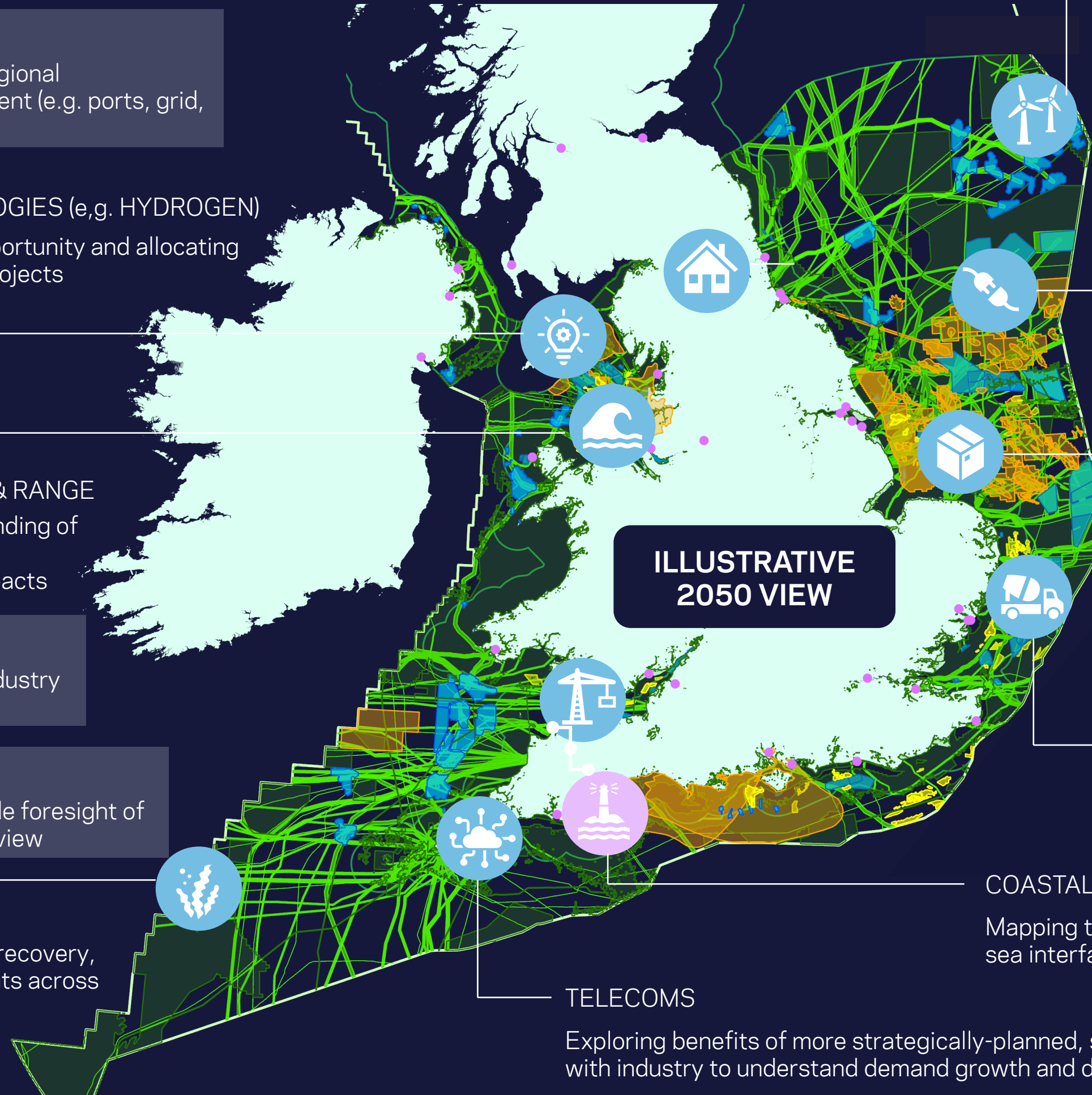
Using evidence and engagement to provide industry viability and limit impacts on livelihoods

DEFENCE

Avoid known dangers and provide foresight of future activities for proactive review

NATURE

Identify the most suitable locations for nature recovery, to support accelerated delivery of improvements across marine and coastal habitats by 2030 in close collaboration with others



OFFSHORE WIND

Mapping and forward planning of the most attractive sites (costs, system value) and minimising impacts/interaction with other sectors and nature

OIL & GAS EXTRACTION

Identify relevant locations and support safe operations and co-location

TRANSMISSION & INTERCONNECTION

Working with the NESO to strategically assess offshore and coastal network needs to ensure deliverable spatial energy and network plans

SHIPPING

Use high quality data to maintain trade and safety at sea

CCS

Mapping future areas of appraisal opportunity (with NSTA) and understand co-location potential with other sectors (e.g. Wind)

AGGREGATES

Identifying future resources and promoting sustainability (on carbon and nature)

COASTAL

Mapping the opportunities, needs and impacts at the land-sea interface (e.g. nature recovery, grid connections)

TELECOMS

Exploring benefits of more strategically-planned, spatially-defined cable infrastructure. Engaging with industry to understand demand growth and decommissioning potential

Thanks for listening!

Jamie.moore@thecrownestate.co.uk

 Marine Delivery
Routemap

 **THE CROWN
ESTATE**

Q&A

www.slido.com

For online and in-person attendees

Code: CoastalFutures25

Wifi: CoastalFutures25

PW: CF_Conf25

Platinum Sponsor



**UNIVERSITY OF
PLYMOUTH**



Coastal Futures Conference 2025

The Path to 2030

Session Two

Sustainable Seas

What is a Sustainable Blue Economy
and how do we make progress
towards it?

Lucy Greenhill,
Howell Marine Consulting



**Coastal Futures
Conference 2025**
The Path to 2030



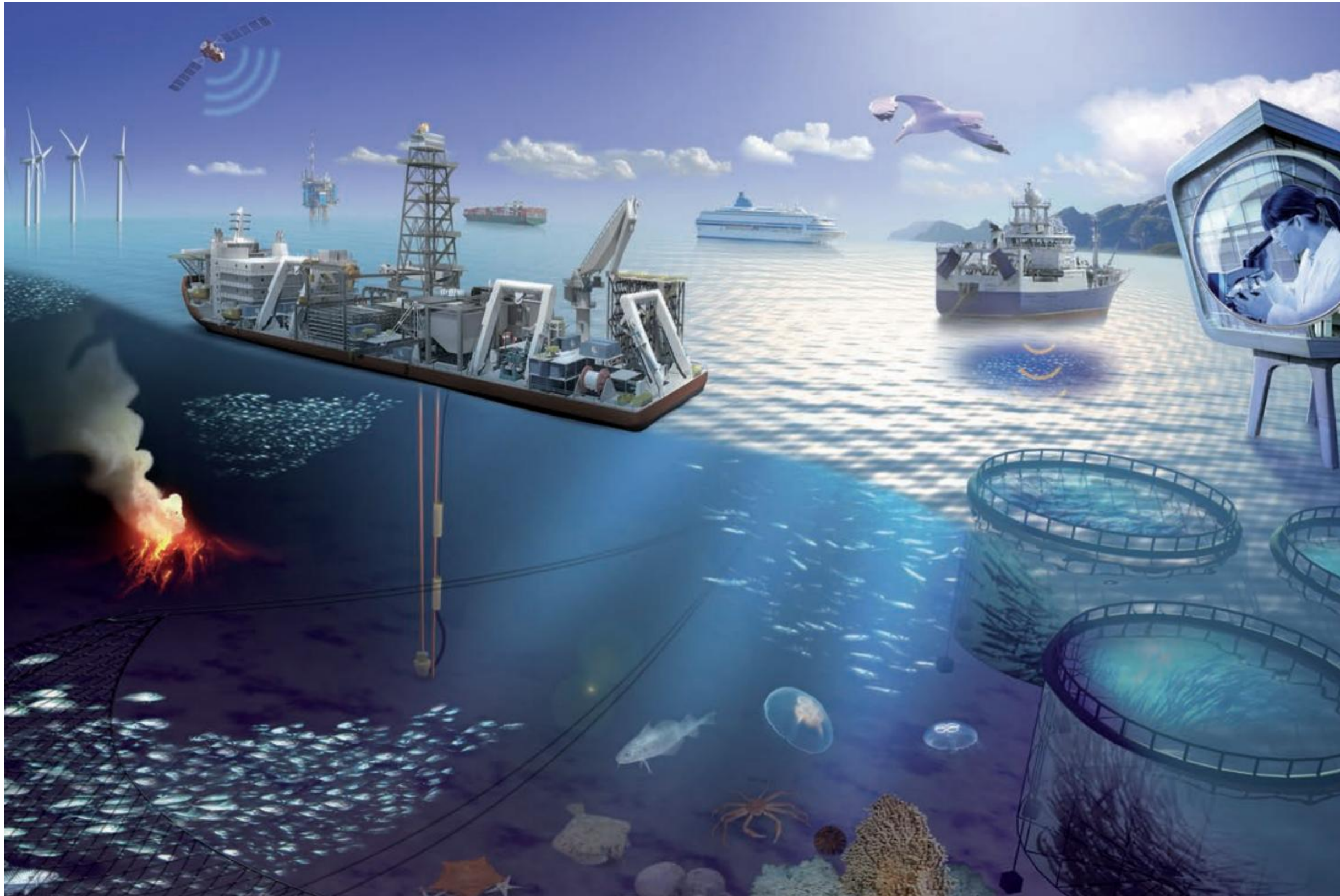
**What is a Sustainable Blue Economy
and how do we make progress
towards it?**

Dr Lucy Greenhill

Portfolio Director – Blue Economy

Ocean and Coastal Futures, 29th January 2025

The 'Blue Economy'



- Economic focus
- Based on growth model
- Doesn't move away from BAU
- Environmental decline

A Sustainable Blue Economy

- Balance economic development, ecosystem health, and social equity
- Focus on transitioning sectors to be more sustainable
- Protect and restore marine and coastal ecosystems
- Aligns with global frameworks - UN SDGs, UNFCCC and GBF



UNEP's Sustainable Blue Economy Transition Framework *(due soon!)*



Goal 1: To protect, restore, and maintain healthy and resilient ecosystems.

Goal 2: To deliver **equity**, equality, and inclusivity in SBE processes and outcomes.

Goal 3: To build **climate** stability and resilience.

Goal 4: To enable **circular economy** approaches for sustainable consumption and production, reducing pollution and waste.



A Regenerative Blue Economy



- Promotes new economic model and circular approaches
- Prioritises conservation and restoration of marine natural capital
- Excludes harmful activities including oil and gas



IUCN (2024), Towards a Regenerative Blue Economy

Do definitions really matter?

- Show political intent
- Inspire and activate

But..

- Ambiguous
- Theoretical



“Our diverse coastal and marine resources are sustainably managed through a knowledge-led blue economy to create socioeconomic prosperity, ensure a healthy marine environment and strengthen resilience for the benefit of current and future generations.” (Indonesia’s Blue Economy Roadmap, 2023)

So, how do we make progress?

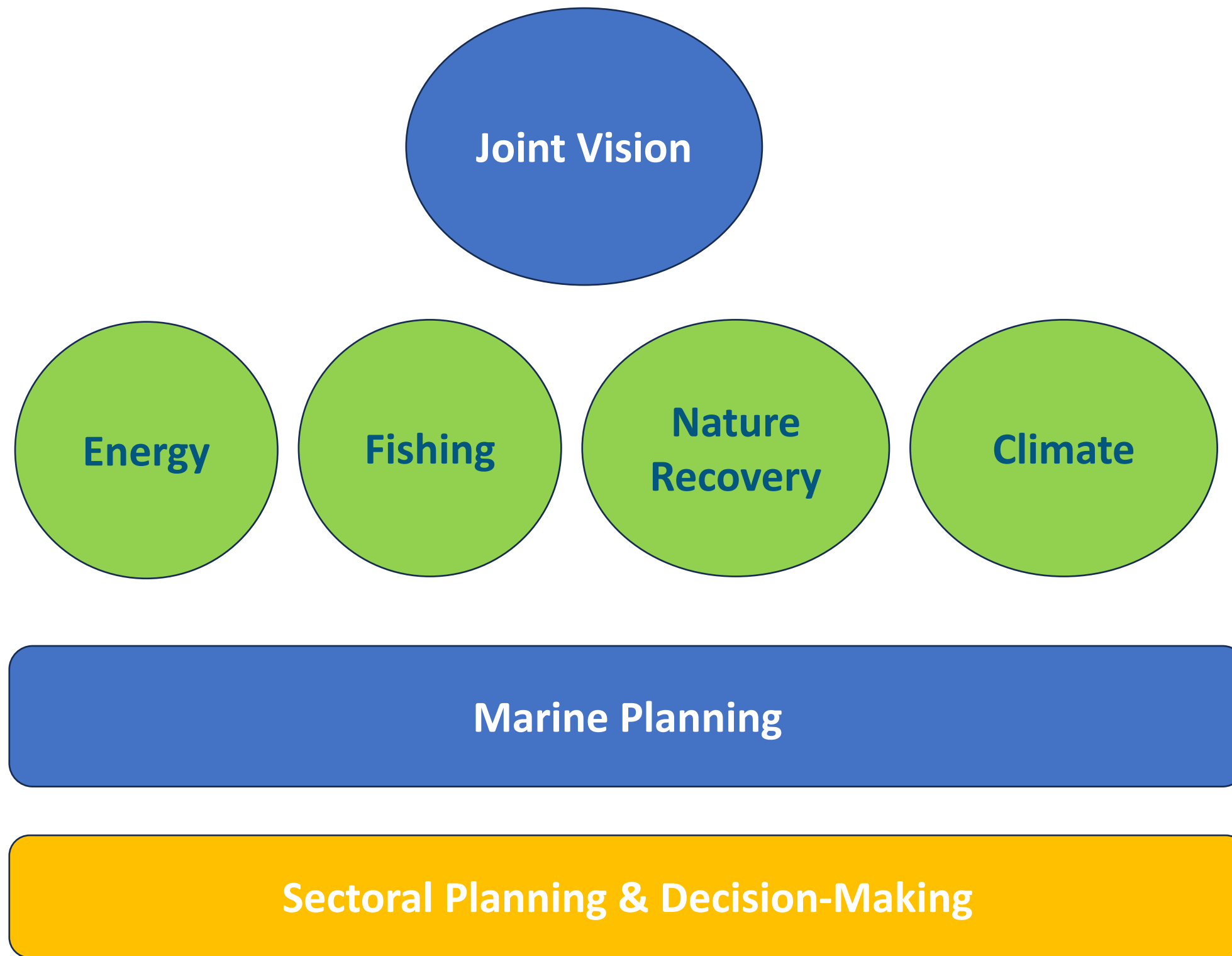
...FOUR insights

1. An Integrated Approach to Policy Development and Delivery

- Clear direction
- Addressing trade-offs head on
- Transparent prioritization
- Joint analysis and strategy development



In practice..



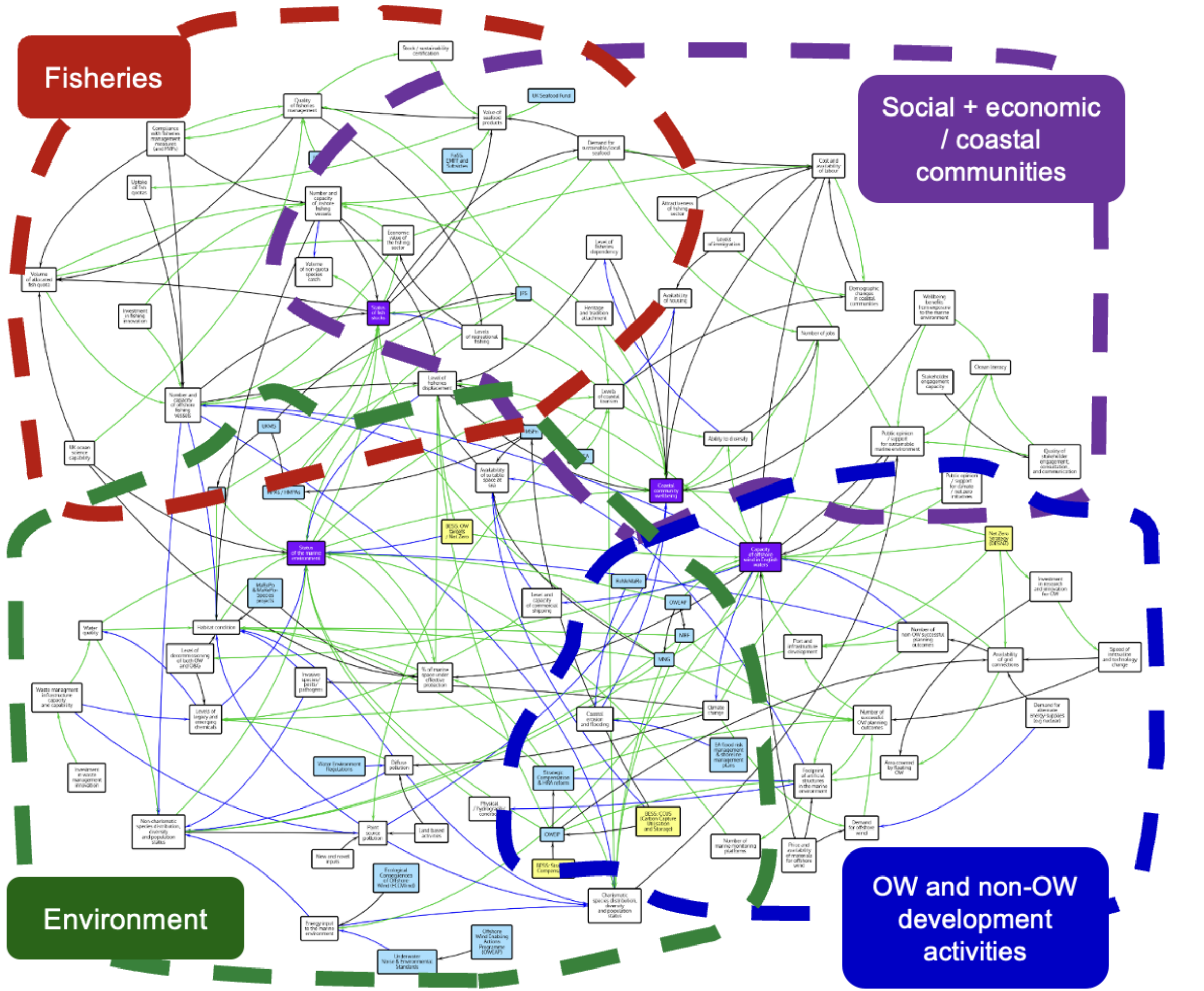
2. Taking a System-based Approach

- Understanding influence on our socio-ecological system (people and nature)
- Explore overlapping influences
- Recognise and avoid unintended consequences
- Identify how efficiencies can be made



In practice..

- Ocean Sustainability System Map
- Participatory System Mapping
- Support conversations and decision-making
- Consider organizational change needed (OToC)



3. Being Participatory and Collaborative

- Sustainability is a social and political issue
- Engaging a wide range of people
- Different ways of seeing problems and creating solutions
- Reflect local context and enable learning
- Promote equitable outcomes



In practice..

- Align marine and ‘social’ drivers to create efficiencies
- Working with local partners and 3rd sector organisations
- Develop ‘process literacy’ to clarify purpose and process
- New approaches to participation e.g. Arts-based methods

Just Transition Framework



**WELLBEING
ECONOMY
ALLIANCE
SCOTLAND**



Community Voice Workshop, Shetland, April 2023



Diverse Marine Values
Integrating Diverse Values into Marine Management



4. Taking a reflexive and learning-based approach

- Making learning central to project / intervention design
- More reflection on how change really happens
- Adapting based on new understanding
- Testing new approaches



In practice..

- Evolving our approach to Monitoring, Evaluation and Learning (MEL)
- Moving from seeking to *prove* to seeking to *improve* through learning-led approaches*
- Building in sense-making to reflect and consider context



* Fisher, C. et al. 2024 <https://sophoi.co.uk/2024/11/ion-the-road-to-learning-led-mel-for-systems-change/>

Making progress towards an SBE

Integrated

- How is this activity supporting greater co-ordination across policy goals?
- What is the contribution to addressing trade-offs?
- What else is going on that this process needs to relate to?

System-based

- How will this intervention lead to change in the real world?
- How are we promoting a system-based way of working?
- What organisational changes could we make to be more system-based?

Collaborative and participatory

- Who will be affected and how are they represented?
- Do we have the best people involved to deliver the most change?
- Do we have the right tools and expertise?

Learning-based

- What frameworks and processes for learning do we have?
- What assumptions are we making and how can we test these?
- What opportunities are there for reflection and how can these be enhanced?

Summary

- High level definitions are relevant but not necessary to make progress
- There is no blueprint for implementing an SBE and system change is messy (but happening)
- Progress can be supported by considering HOW we do things:

INTEGRATED
SYSTEM-BASED
PARTICIPATORY
AND
COLLABORATIVE
LEARNING-BASED

THANK YOU!

HMC
HOWELL MARINE
CONSULTING

lucy@howellmarine.co.uk



Q&A

www.slido.com

For online and in-person attendees

Code: CoastalFutures25

Wifi: CoastalFutures25

PW: CF_Conf25

Platinum Sponsor



**UNIVERSITY OF
PLYMOUTH**



Coastal Futures Conference 2025

The Path to 2030

Session Two

Sustainable Seas

Can we really build a windfarm in
two years?

Siobhan Browne,
Marine Management Organisation



**Coastal Futures
Conference 2025**

The Path to 2030



Marine
Management
Organisation

Can we really build a windfarm in two years?

Siobhan Browne
Manager of the Strategic Renewables unit
siobhan.browne@marinemangement.org.uk

...ambitious for our seas and coasts



The Strategic Renewables Unit

Established April 2021

British Energy Security Strategy-
increased focus on renewables

Supports renewables work
across the MMO

Focus on strategic not casework



...ambitious for our seas and coasts

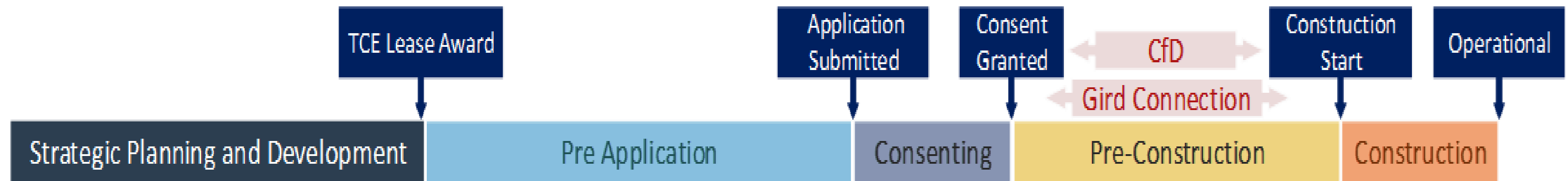
Can we really build a windfarm in two years?

Analysis showed:

- Deployment time has increased from 7 years in Round 1 to 16 years in Round 3
- Deployment time per GW has reduced
- Consenting is the fastest stage

BUT

- All stages of offshore wind are linked
- Consenting builds on strategic planning and preapplication stages
- Extensive work required during pre-construction.



...ambitious for our seas and coasts

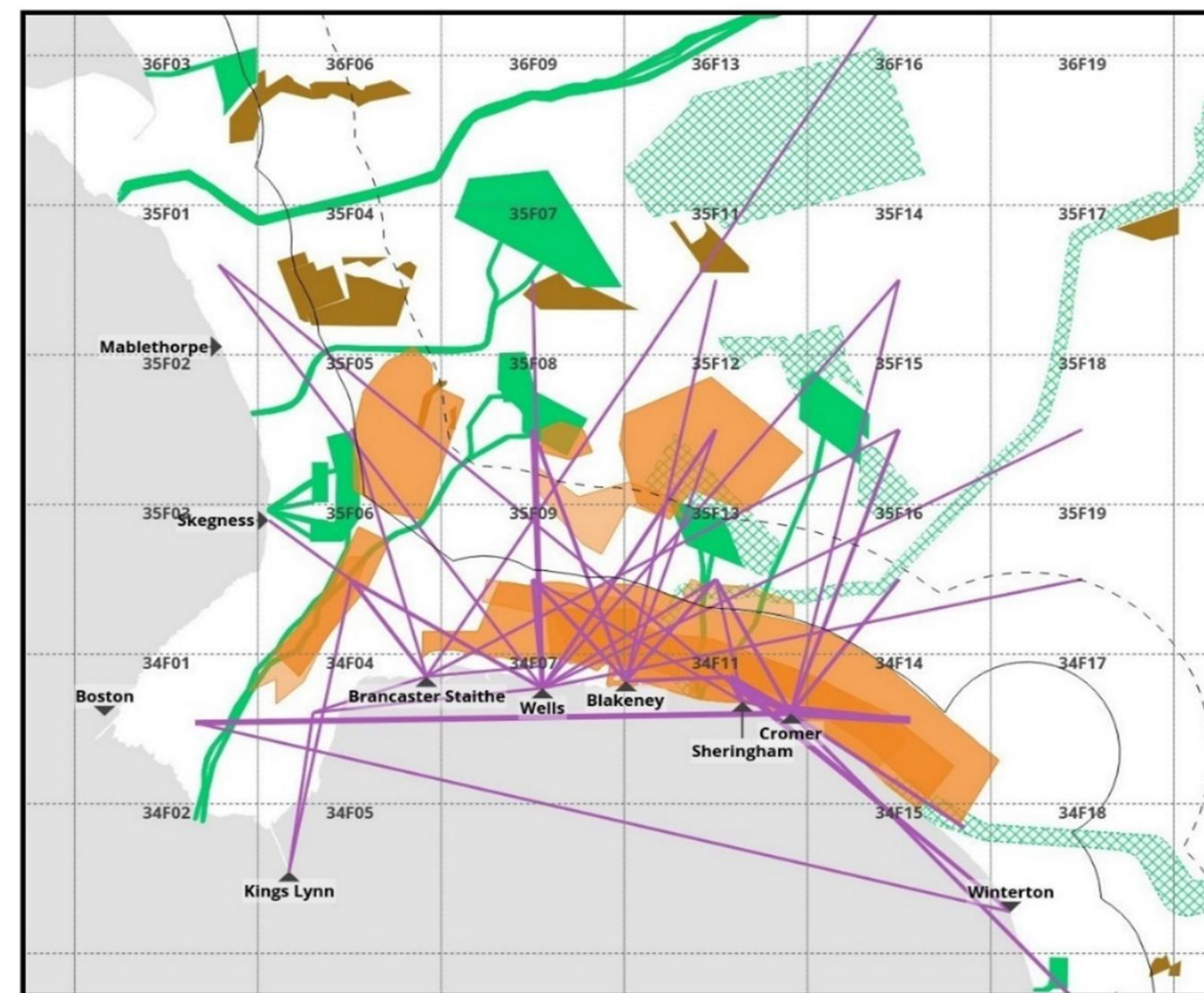
Pre-application

- Improvements to environmental and social assessments.
- Learning from what has gone before

Examples

- Consistent survey data collection and better use of monitoring from operational OWFs to inform new projects.
- Evidence project to map the sensitivity of the <12m fishing fleet to offshore wind.
- Industry and government led improvement programmes

Figure 10: Potting for crabs and lobster (n=9) in The Wash and north Norfolk coasts



Pre-construction

- Agreeing requirements early

Examples

- Supporting grid connection improvement work via working groups and facilitating engagement with fisheries.
- Standardising the reporting of post-consent monitoring.
- Managing underwater noise levels.



...ambitious for our seas and coasts

- There is scope to increase the speed of offshore wind deployment to meet 2030 targets.
- Improvements must consider all marine users and interests.
- Move beyond ‘barriers’ to emphasise enablers and delivering for multiple interests.



...ambitious for our seas and coasts



Marine
Management
Organisation

Thank you for listening

Siobhan Browne

Manager of the Strategic Renewables unit

siobhan.browne@marinemanagement.org.uk

...ambitious for our seas and coasts

Q&A

www.slido.com

For online and in-person attendees

Code: CoastalFutures25

Wifi: CoastalFutures25

PW: CF_Conf25

Platinum Sponsor



**UNIVERSITY OF
PLYMOUTH**



Coastal Futures Conference 2025

The Path to 2030



Session Two Panel Debate

Sustainable Seas

Can we meet the 2030 targets whilst growing a sustainable blue economy?

Chair: Rachel Solomon Williams, Executive Director, Aldersgate Group

Jamie Moore, The Crown Estate

Lucy Greenhill, Howell Marine Consulting

Siobhan Browne, Marine Management Organisation

Samuel Wrobel, Senior Marine Policy Officer, RSPB


Peter Barham, CEO, Seabed User and Developer Group

Chris Ranford, CEO, Cornish Fish Producers Organisation

Tom Ash, Senior Policy Officer, Wildlife and Countryside Link

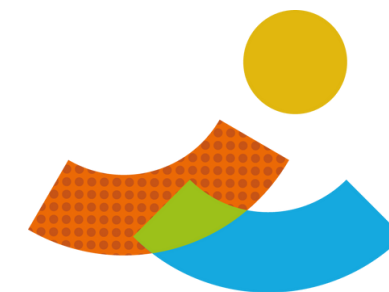
Session Two Posters

Sunley Room

- 
- 6. Prof. Nicola Beaumont: Sea the Value: Marine Biodiversity Benefits for a Sustainable Society
 - 11. Michela De Dominicis: Assessing the Effects of Offshore Windfarms & Climate Change in the North Sea
 - 16. Aisling McGarrigle: Unlocking Investment - A Roadmap for High Integrity Marine Natural Capital Markets in the UK
 - 21. Michael Barry Thompson: Applying marine spatial planning to the Red Sea Southern Islands
 - 22. Evangeline Wilby: Climate and nature: sustainable offshore wind deployment for 2030 targets



Refreshments 15:00 – 16:00



**Coastal
Futures
2025**

Delivered by OCF

29 & 30 January 2025 | London & online

 www.coastal-futures.net

 Ocean and Coastal Futures

 #CoastalFutures25